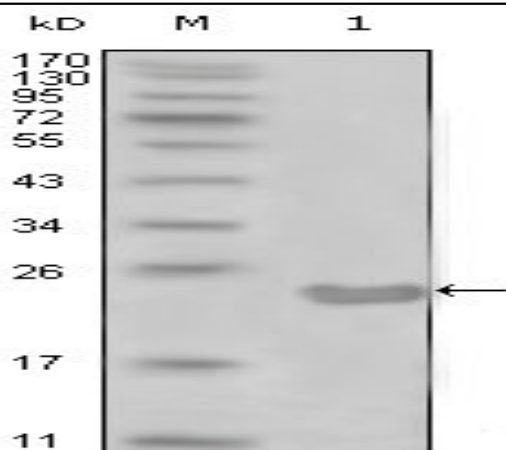


CD10 Monoclonal Antibody

Catalog No :	YM0100
Reactivity :	Human
Applications :	WB;IHC;IF;ELISA
Target :	CD10
Fields :	>>Renin-angiotensin system;>>Hematopoietic cell lineage;>>Protein digestion and absorption;>>Alzheimer disease
Gene Name :	MME
Protein Name :	Neprilysin
Human Gene Id :	4311
Human Swiss Prot No :	P08473
Mouse Swiss Prot No :	Q61391
Immunogen :	Purified recombinant fragment of CD10 expressed in E. Coli.
Specificity :	CD10 Monoclonal Antibody detects endogenous levels of CD10 protein.
Formulation :	Liquid in PBS containing 50% glycerol, 0.5% BSA and 0.02% sodium azide.
Source :	Monoclonal, Mouse
Dilution :	WB 1:500 - 1:2000. IHC 1:200 - 1:1000. ELISA: 1:10000.. IF 1:50-200
Purification :	Affinity purification
Storage Stability :	-15°C to -25°C/1 year(Do not lower than -25°C)
Molecularweight :	86kD

Cell Pathway :	Renin-angiotensin system;Hematopoietic cell lineage;Alzheimer's disease;
P References :	<ol style="list-style-type: none">1. Journal of Gastroenterology,1996 Feb.31(1):12-7.2. British Journal of Haematology,1995,89(3):623-6.
Background :	<p>This gene encodes a common acute lymphocytic leukemia antigen that is an important cell surface marker in the diagnosis of human acute lymphocytic leukemia (ALL). This protein is present on leukemic cells of pre-B phenotype, which represent 85% of cases of ALL. This protein is not restricted to leukemic cells, however, and is found on a variety of normal tissues. It is a glycoprotein that is particularly abundant in kidney, where it is present on the brush border of proximal tubules and on glomerular epithelium. The protein is a neutral endopeptidase that cleaves peptides at the amino side of hydrophobic residues and inactivates several peptide hormones including glucagon, enkephalins, substance P, neurotensin, oxytocin, and bradykinin. This gene, which encodes a 100-kD type II transmembrane glycoprotein, exists in a single copy of greater than 45 kb. The 5' untranslated region of this</p>
Function :	<p>catalytic activity:Preferential cleavage of polypeptides between hydrophobic residues, particularly with Phe or Tyr at P1'.,cofactor:Binds 1 zinc ion per subunit.,disease:Important cell surface marker in the diagnostic of human acute lymphocytic leukemia.,enzyme regulation:Inhibited in a dose dependent manner by opiorphin.,function:Thermolysin-like specificity, but is almost confined on acting on polypeptides of up to 30 amino acids. Biologically important in the destruction of opioid peptides such as Met- and Leu-enkephalins by cleavage of a Gly-Phe bond. Involved in the degradation of atrial natriuretic factor (ANF).,similarity:Belongs to the peptidase M13 family.,</p>
Subcellular Location :	Cell membrane; Single-pass type II membrane protein.
Expression :	Adrenal cortex,Brain,Kidney,Placenta,
Sort :	3346
No4 :	1
Host :	Mouse
Modifications :	Unmodified

Products Images



Western Blot analysis using CD10 Monoclonal Antibody against truncated CD10-His recombinant protein (1).



Immunohistochemistry analysis of paraffin-embedded human breast ductal myoepithelium, showing cytoplasmic and membrane location with DAB staining using CD10 Monoclonal Antibody.