

## Casein Kinase Ia Monoclonal Antibody

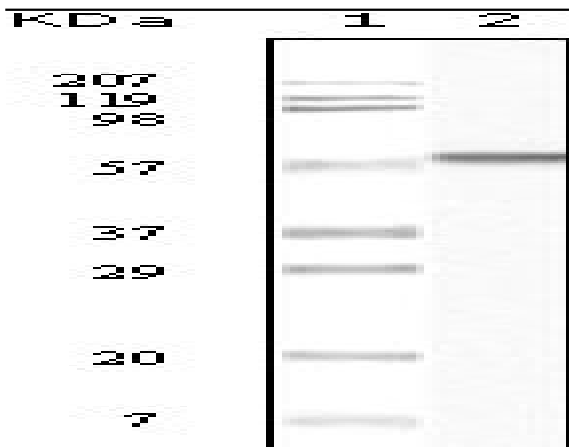
<b>Catalog No :</b>	YM0092
<b>Reactivity :</b>	Human
<b>Applications :</b>	WB;IHC;IF;ELISA
<b>Target :</b>	Casein Kinase Ia
<b>Fields :</b>	>>Wnt signaling pathway;>>Hedgehog signaling pathway;>>Alzheimer disease;>>Pathways of neurodegeneration - multiple diseases;>>Human papillomavirus infection;>>Breast cancer;>>Hepatocellular carcinoma;>>Gastric cancer
<b>Gene Name :</b>	CSNK1A1
<b>Protein Name :</b>	Casein kinase I isoform alpha
<b>Human Gene Id :</b>	1452
<b>Human Swiss Prot No :</b>	P48729
<b>Mouse Swiss Prot No :</b>	Q8BK63
<b>Immunogen :</b>	Purified recombinant fragment of Casein Kinase Ia expressed in E. Coli.
<b>Specificity :</b>	Casein Kinase Ia Monoclonal Antibody detects endogenous levels of Casein Kinase Ia protein.
<b>Formulation :</b>	Liquid in PBS containing 50% glycerol, 0.5% BSA and 0.02% sodium azide.
<b>Source :</b>	Monoclonal, Mouse
<b>Dilution :</b>	WB 1:500 - 1:2000. IHC 1:200 - 1:1000. ELISA: 1:10000.. IF 1:50-200
<b>Purification :</b>	Affinity purification
<b>Storage Stability :</b>	-15°C to -25°C/1 year(Do not lower than -25°C)

---

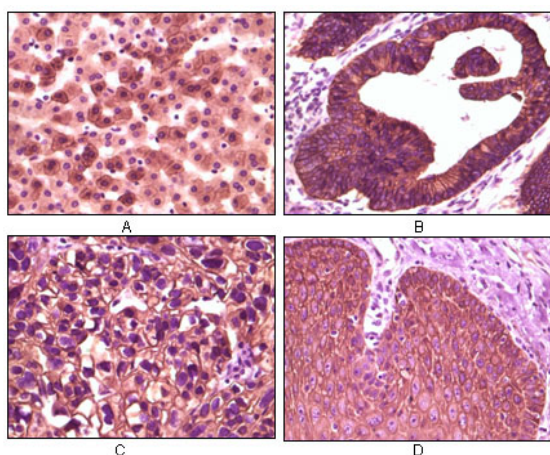
<b>Molecularweight :</b>	39kD
<b>Cell Pathway :</b>	WNT;WNT-T CELLHedgehog;
<b>P References :</b>	1. Ricardo G. Espinola, Robin A. Pixley, Berhane Ghebrehiwet. Blood (ASH Annual Meeting Abstracts), Nov 2005; 106: 2666.
<b>Background :</b>	<p>catalytic activity:ATP + a protein = ADP + a phosphoprotein.,function:Casein kinases are operationally defined by their preferential utilization of acidic proteins such as caseins as substrates. It can phosphorylate a large number of proteins. Participates in Wnt signaling. Phosphorylates CTNNB1 on 'Ser-45'. ,similarity:Belongs to the protein kinase superfamily.,similarity:Belongs to the protein kinase superfamily. CK1 Ser/Thr protein kinase family. Casein kinase I subfamily.,similarity:Contains 1 protein kinase domain.,subunit:Monomer. Interacts with the Axin complex.,</p>
<b>Function :</b>	<p>catalytic activity:ATP + a protein = ADP + a phosphoprotein.,function:Casein kinases are operationally defined by their preferential utilization of acidic proteins such as caseins as substrates. It can phosphorylate a large number of proteins. Participates in Wnt signaling. Phosphorylates CTNNB1 on 'Ser-45'. ,similarity:Belongs to the protein kinase superfamily.,similarity:Belongs to the protein kinase superfamily. CK1 Ser/Thr protein kinase family. Casein kinase I subfamily.,similarity:Contains 1 protein kinase domain.,subunit:Monomer. Interacts with the Axin complex.,</p>
<b>Subcellular Location :</b>	<p>Cytoplasm . Cytoplasm, cytoskeleton, microtubule organizing center, centrosome . Chromosome, centromere, kinetochore . Nucleus speckle . Cytoplasm, cytoskeleton, cilium basal body . Cytoplasm, cytoskeleton, spindle . Localizes to the centrosome in interphase cells, and to kinetochore fibers during mitosis. Also recruited to the keratin cytoskeleton (PubMed:23902688). .</p>
<b>Expression :</b>	Brain,Epithelium,Liver,Lung,Placenta,Skin,
<b>Sort :</b>	3136
<b>No4 :</b>	1
<b>Host :</b>	Mouse
<b>Modifications :</b>	Unmodified

---

**Products Images**



Western Blot analysis using Casein Kinase Ia Monoclonal Antibody against truncated CK1 recombinant protein.



Immunohistochemistry analysis of paraffin-embedded human liver tissue (A), colon carcinoma (B), lung carcinoma (C) and esophagus tissue (D), showing membrane localization with DAB staining using Casein Kinase Ia Monoclonal Antibody.