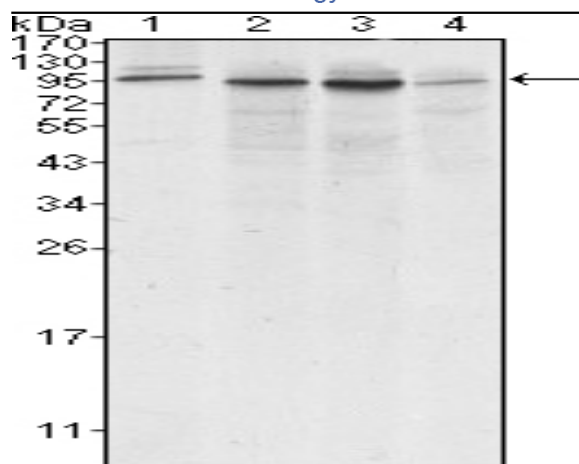


Calnexin Monoclonal Antibody

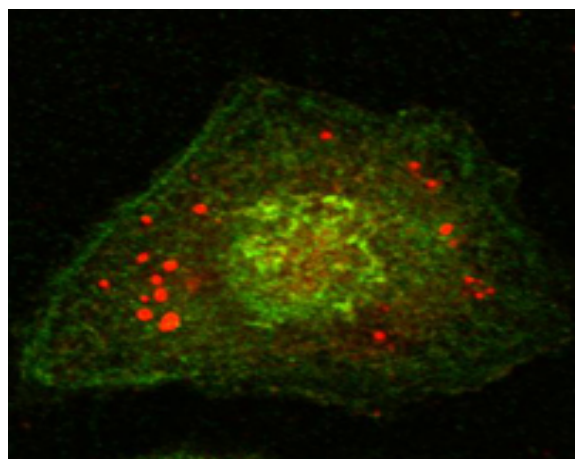
Catalog No :	YM0089
Reactivity :	Human
Applications :	WB;IF;ELISA
Target :	Calnexin
Fields :	>>Protein processing in endoplasmic reticulum;>>Phagosome;>>Antigen processing and presentation;>>Thyroid hormone synthesis;>>Human T-cell leukemia virus 1 infection
Gene Name :	CANX
Protein Name :	Calnexin
Human Gene Id :	821
Human Swiss Prot No :	P27824
Mouse Swiss Prot No :	P35564
Immunogen :	Synthetic peptide corresponding to aa (CEAAEERPWLWVVYILTVAL) of human Calnexin, conjugated to KLH.
Specificity :	Calnexin Monoclonal Antibody detects endogenous levels of Calnexin protein.
Formulation :	Liquid in PBS containing 50% glycerol, 0.5% BSA and 0.02% sodium azide.
Source :	Monoclonal, Mouse
Dilution :	WB 1:500 - 1:2000. IF 1:200 - 1:1000. ELISA: 1:10000. Not yet tested in other applications.
Purification :	Affinity purification
Storage Stability :	-15°C to -25°C/1 year(Do not lower than -25°C)

Molecularweight :	68kD
Cell Pathway :	Antigen processing and presentation;
P References :	<ol style="list-style-type: none">1. Science. 2003 Feb 28;299(5611):1394-7.2. Exp Cell Res. 2004 Mar 10;294(1):244-53.3. Science. 2004 Apr 23;304(5670):600-2.
Background :	<p>This gene encodes a member of the calnexin family of molecular chaperones. The encoded protein is a calcium-binding, endoplasmic reticulum (ER)-associated protein that interacts transiently with newly synthesized N-linked glycoproteins, facilitating protein folding and assembly. It may also play a central role in the quality control of protein folding by retaining incorrectly folded protein subunits within the ER for degradation. Alternatively spliced transcript variants encoding the same protein have been described. [provided by RefSeq, Jul 2008],</p>
Function :	<p>function:Calcium-binding protein that interacts with newly synthesized glycoproteins in the endoplasmic reticulum. It may act in assisting protein assembly and/or in the retention within the ER of unassembled protein subunits. It seems to play a major role in the quality control apparatus of the ER by the retention of incorrectly folded proteins.,online information:Calnexin entry,similarity:Belongs to the calreticulin family.,subcellular location:Identified by mass spectrometry in melanosome fractions from stage I to stage IV.,</p>
Subcellular Location :	<p>Endoplasmic reticulum membrane ; Single-pass type I membrane protein . Endoplasmic reticulum . Melanosome . Identified by mass spectrometry in melanosome fractions from stage I to stage IV (PubMed:12643545, PubMed:17081065). The palmitoylated form preferentially localizes to the perinuclear rough ER (PubMed:22314232). .</p>
Expression :	<p>B-cell lymphoma,Epithelium,Fibroblast,Keratinocyte,Kidney,Liver,Lymph,Placenta,Platelet,</p>
Sort :	3063
No4 :	1
Host :	Mouse
Modifications :	Unmodified

Products Images



Western Blot analysis using Calnexin Monoclonal Antibody against A431 (1), HeLa (2), MCF-7 (3) and A549 (4) cell lysate.



Confocal immunofluorescence analysis of HeLa cells using Calnexin Monoclonal Antibody (green).