

c-Abl Monoclonal Antibody

Catalog No :	YM0087
Reactivity :	Human
Applications :	WB;ELISA
Target :	ABL1
Fields :	>>ErbB signaling pathway;>>Ras signaling pathway;>>Cell cycle;>>Axon guidance;>>Neurotrophin signaling pathway;>>Pathogenic Escherichia coli infection;>>Pathways in cancer;>>MicroRNAs in cancer;>>Chemical carcinogenesis - reactive oxygen species;>>Chronic myeloid leukemia;>>Viral myocarditis
Gene Name :	ABL1
Protein Name :	Tyrosine-protein kinase ABL1
Human Gene Id :	25
Human Swiss Prot No :	P00519
Mouse Swiss Prot No :	P00520
Immunogen :	Purified recombinant fragment of c-Abl (aa577-650) expressed in E. Coli.
Specificity :	c-Abl Monoclonal Antibody detects endogenous levels of c-Abl protein.
Formulation :	Liquid in PBS containing 50% glycerol, 0.5% BSA and 0.02% sodium azide.
Source :	Monoclonal, Mouse
Dilution :	WB 1:500 - 1:2000. ELISA: 1:10000. Not yet tested in other applications.
Purification :	Affinity purification
Storage Stability :	-15°C to -25°C/1 year(Do not lower than -25°C)

Molecularweight : 123kD

Cell Pathway : ErbB_HER;Cell_Cycle_G1S;Cell_Cycle_G2M_DNA;Axon guidance;Neurotrophin;Pathogenic Escherichia coli infection;Pathways in cancer;Chronic myeloid leukemia;Viral myocarditis;

P References :

1. Cell. 2006 Nov 3;127(3):635-48.
2. Biochem Biophys Res Commun. 2007 Jan 12;352(2):431-6.

Background : This gene is a protooncogene that encodes a protein tyrosine kinase involved in a variety of cellular processes, including cell division, adhesion, differentiation, and response to stress. The activity of the protein is negatively regulated by its SH3 domain, whereby deletion of the region encoding this domain results in an oncogene. The ubiquitously expressed protein has DNA-binding activity that is regulated by CDC2-mediated phosphorylation, suggesting a cell cycle function. This gene has been found fused to a variety of translocation partner genes in various leukemias, most notably the t(9;22) translocation that results in a fusion with the 5' end of the breakpoint cluster region gene (BCR; MIM:151410). Alternative splicing of this gene results in two transcript variants, which contain alternative first exons that are spliced to the remaining common exons. [pr

Function : catalytic activity:ATP + a [protein]-L-tyrosine = ADP + a [protein]-L-tyrosine phosphate.,cofactor:Magnesium or manganese.,disease:A chromosomal aberration involving ABL1 is a cause of chronic myeloid leukemia (CML) [MIM:608232]. Translocation t(9;22)(q34;q11) with BCR. The translocation produces a BCR-ABL found also in acute myeloid leukemia (AML) and acute lymphoblastic leukemia (ALL).,enzyme regulation:Stabilized in the inactive form by an association between the SH3 domain and the SH2-TK linker region, interactions of the amino-terminal cap, and contributions from an amino-terminal myristoyl group and phospholipids. Activated by autophosphorylation as well as by SRC-family kinase-mediated phosphorylation. Activated by RIN1 binding to the SH2 and SH3 domains. Inhibited by imatinib mesylate (Gleevec) which is used for the treatment of chronic myeloid leukemia (CML).,function:Regulates

Subcellular Location : Cytoplasm, cytoskeleton. Nucleus. Mitochondrion . Shuttles between the nucleus and cytoplasm depending on environmental signals. Sequestered into the cytoplasm through interaction with 14-3-3 proteins. Localizes to mitochondria in response to oxidative stress (By similarity). .; [Isoform IB]: Nucleus membrane; Lipid-anchor. The myristoylated c-ABL protein is reported to be nuclear.

Expression : Widely expressed.

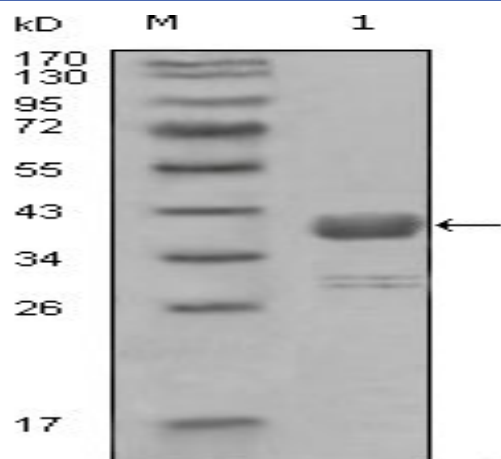
Tag : hot

Sort : 2997

No4 : 1

Host : Mouse**Modifications :** Unmodified

Products Images



Western Blot analysis using c-Abl Monoclonal Antibody against truncated GST-ABL1 recombinant protein (1).