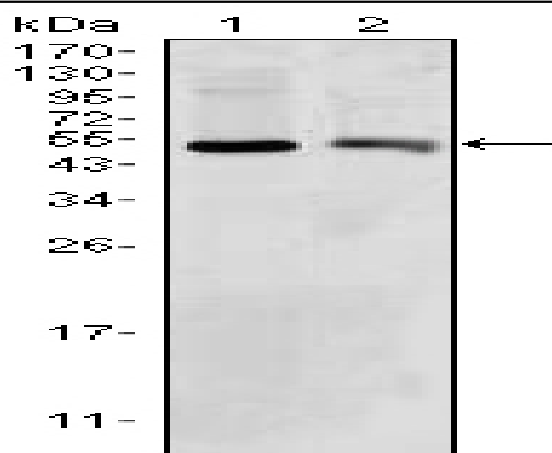


BDH1 Monoclonal Antibody

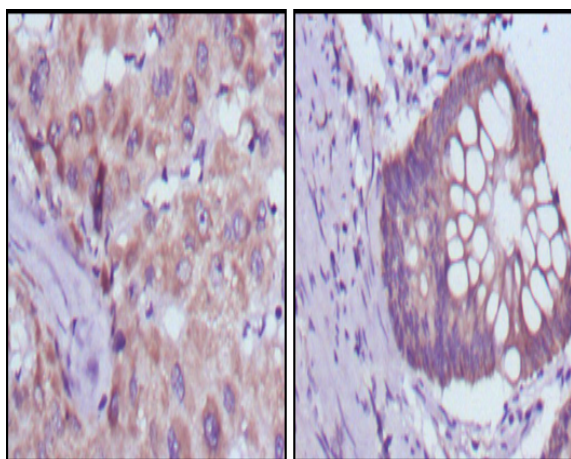
Catalog No :	YM0059
Reactivity :	Human;Mouse
Applications :	WB;IHC;IF;ELISA
Target :	BDH1
Fields :	>>Butanoate metabolism;>>Metabolic pathways
Gene Name :	BDH1
Protein Name :	D-beta-hydroxybutyrate dehydrogenase, mitochondrial
Human Gene Id :	622
Human Swiss Prot No :	Q02338
Mouse Gene Id :	71911
Mouse Swiss Prot No :	Q80XN0
Immunogen :	Purified recombinant fragment of human BDH1 expressed in E. Coli.
Specificity :	BDH1 Monoclonal Antibody detects endogenous levels of BDH1 protein.
Formulation :	Liquid in PBS containing 50% glycerol, 0.5% BSA and 0.02% sodium azide.
Source :	Monoclonal, Mouse
Dilution :	WB 1:500 - 1:2000. IHC 1:200 - 1:1000. ELISA: 1:10000.. IF 1:50-200
Purification :	Affinity purification
Storage Stability :	-15°C to -25°C/1 year(Do not lower than -25°C)
Molecularweight :	38kD

Cell Pathway :	Synthesis and degradation of ketone bodies;Butanoate metabolism;
P References :	<ol style="list-style-type: none">1. Biochemistry. 1996 Jun 25;35(25):8158-65.2. Biochemistry. 2000 Oct 3;39(39):11928-38.3. Proc Natl Acad Sci U S A. 2001 Dec 18;98(26):15089-94.
Background :	This gene encodes a member of the short-chain dehydrogenase/reductase gene family. The encoded protein forms a homotetrameric lipid-requiring enzyme of the mitochondrial membrane and has a specific requirement for phosphatidylcholine for optimal enzymatic activity. The encoded protein catalyzes the interconversion of acetoacetate and (R)-3-hydroxybutyrate, the two major ketone bodies produced during fatty acid catabolism. Alternatively spliced transcript variants encoding the same protein have been described. [provided by RefSeq, Jul 2008],
Function :	catalytic activity:(R)-3-hydroxybutanoate + NAD(+) = acetoacetate + NADH.,enzyme regulation:Requires phosphatidylcholine as an allosteric activator for enzymatic activity.,similarity:Belongs to the short-chain dehydrogenases/reductases (SDR) family.,subunit:Homotetramer.,
Subcellular Location :	Mitochondrion inner membrane . Mitochondrion matrix .
Expression :	Heart,Lung,Ovary,
Sort :	2646
No4 :	1
Host :	Mouse
Modifications :	Unmodified

Products Images



Western Blot analysis using BDH1 Monoclonal Antibody against HepG2 (1) and NIH/3T3 (2) cell lysate.



Immunohistochemistry analysis of paraffin-embedded human liver cancer (left) and colorectal cancer tissues (right) with DAB staining using BDH1 Monoclonal Antibody.