

Axl Monoclonal Antibody

Catalog No :	YM0055
Reactivity :	Human
Applications :	WB;IF;ELISA
Target :	Axl
Fields :	>>EGFR tyrosine kinase inhibitor resistance
Gene Name :	AXL UFO
Protein Name :	Tyrosine-protein kinase receptor UFO
Human Gene Id :	558
Human Swiss Prot No :	P30530
Mouse Swiss Prot No :	Q00993
Immunogen :	Purified recombinant extracellular fragment of human Axl fused with hlgGFc tag expressed in HEK293 cell line.
Specificity :	Axl Monoclonal Antibody detects endogenous levels of Axl protein.
Formulation :	Liquid in PBS containing 50% glycerol, 0.5% BSA and 0.02% sodium azide.
Source :	Monoclonal, Mouse
Dilution :	WB 1:500 - 1:2000. IF 1:200 - 1:1000. ELISA: 1:10000. Not yet tested in other applications.
Purification :	Affinity purification
Storage Stability :	-15°C to -25°C/1 year(Do not lower than -25°C)
Observed Band :	130kD

P References :

1. Br J Cancer. 2006 May 22;94(10):1446-51.
 2. Proc Natl Acad Sci U S A. 2006 Apr 11;103(15):5799-804.
-

Background :

The protein encoded by this gene is a member of the Tyro3-Axl-Mer (TAM) receptor tyrosine kinase subfamily. The encoded protein possesses an extracellular domain which is composed of two immunoglobulin-like motifs at the N-terminal, followed by two fibronectin type-III motifs. It transduces signals from the extracellular matrix into the cytoplasm by binding to the vitamin K-dependent protein growth arrest-specific 6 (Gas6). This gene may be involved in several cellular functions including growth, migration, aggregation and anti-inflammation in multiple cell types. Alternative splicing results in multiple transcript variants of this gene. [provided by RefSeq, Jul 2013],

Function :

catalytic activity:ATP + a [protein]-L-tyrosine = ADP + a [protein]-L-tyrosine phosphate.,disease:Has transforming potential in patients with chronic myeloproliferative disorder or chronic myelocytic leukemia.,function:May function as a signal transducer between specific cell types of mesodermal origin. In case of filovirus infection, seems to function as a cell entry factor.,similarity:Belongs to the protein kinase superfamily. Tyr protein kinase family. AXL/UFO subfamily.,similarity:Contains 1 protein kinase domain.,similarity:Contains 2 fibronectin type-III domains.,similarity:Contains 2 Ig-like C2-type (immunoglobulin-like) domains.,subunit:Heterodimer and heterotetramer with GAS6.,tissue specificity:Highly expressed in metastatic colon tumors. Expressed in primary colon tumors. Weakly expressed in normal colon tissue.,

Subcellular Location :

Cell membrane ; Single-pass type I membrane protein .

Expression :

Highly expressed in metastatic colon tumors. Expressed in primary colon tumors. Weakly expressed in normal colon tissue.

Sort :

2536

No4 :

1

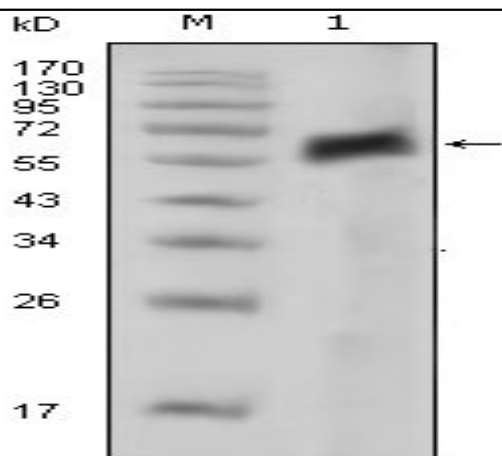
Host :

Mouse

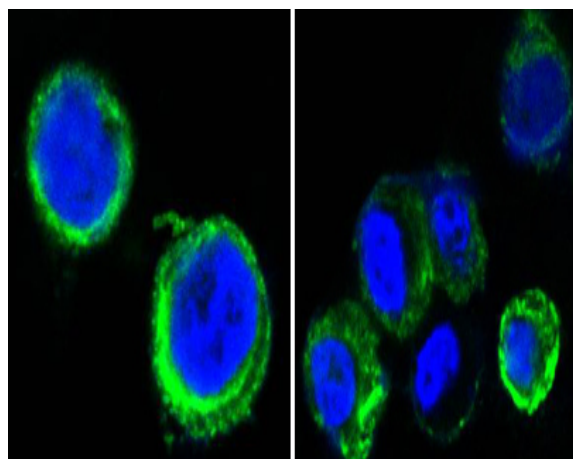
Modifications :

Unmodified

Products Images



Western Blot analysis using Axl Monoclonal Antibody against extracellular domain of human AXL (aa19-444).



Confocal immunofluorescence analysis of methanol-fixed HEK293 cells trasfected with AXL-hlgGfC using Axl Monoclonal Antibody (green), showing cytoplasmic and membrane localization. Blue: DRAQ5 fluorescent DNA dye.