

**A1BG Monoclonal Antibody**

<b>Catalog No :</b>	YM0004
<b>Reactivity :</b>	Human
<b>Applications :</b>	WB;IHC;IF;ELISA
<b>Target :</b>	A1BG
<b>Gene Name :</b>	A1BG
<b>Protein Name :</b>	Alpha-1B-glycoprotein
<b>Human Gene Id :</b>	1
<b>Human Swiss Prot No :</b>	P04217
<b>Mouse Swiss Prot No :</b>	Q19LI2
<b>Immunogen :</b>	Purified recombinant fragment of human A1BG expressed in E. Coli.
<b>Specificity :</b>	A1BG Monoclonal Antibody detects endogenous levels of A1BG protein.
<b>Formulation :</b>	Liquid in PBS containing 50% glycerol, 0.5% BSA and 0.02% sodium azide.
<b>Source :</b>	Monoclonal, Mouse
<b>Dilution :</b>	WB 1:500 - 1:2000. IHC 1:200 - 1:1000. ELISA: 1:10000.. IF 1:50-200
<b>Purification :</b>	Affinity purification
<b>Storage Stability :</b>	-15°C to -25°C/1 year(Do not lower than -25°C)
<b>Molecularweight :</b>	54kD
<b>P References :</b>	1. Hum Genet. 1987 Jun;76(2):111-5. 2. Proteomics. 2004 Feb;4(2):454-65. 3. BMC Cancer. 2008 Aug 16;8:241.

**Background :** The protein encoded by this gene is a plasma glycoprotein of unknown function. The protein shows sequence similarity to the variable regions of some immunoglobulin supergene family member proteins. [provided by RefSeq, Jul 2008],

**Function :** online information:The Singapore human mutation and polymorphism database,similarity:Contains 5 Ig-like V-type (immunoglobulin-like) domains.,tissue specificity:Plasma.,

**Subcellular Location :** Secreted.

**Expression :** Plasma.

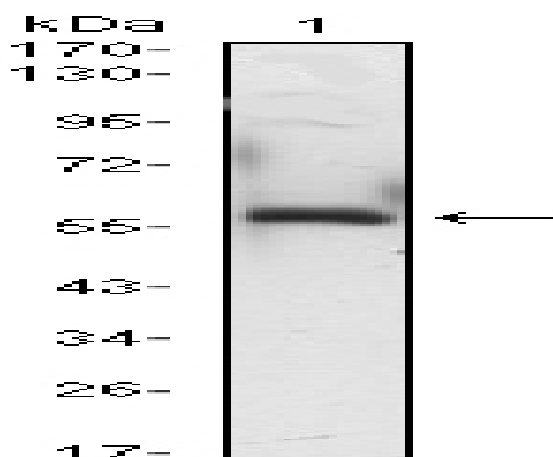
**Sort :** 1549

**No4 :** 1

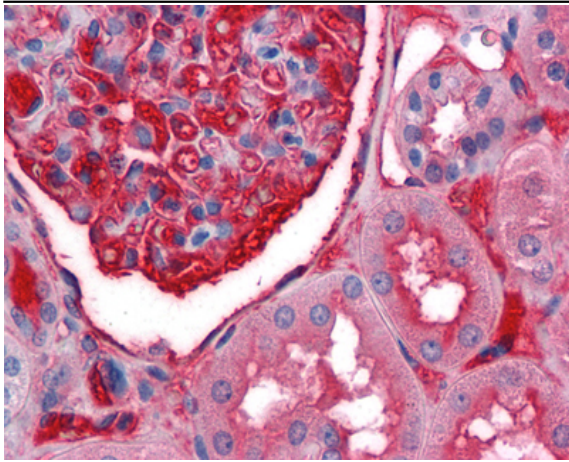
**Host :** Mouse

**Modifications :** Unmodified

## Products Images



Western Blot analysis using A1BG Monoclonal Antibody against A1BG-hlgGfC transfected HEK293 (3) cell lysate.



Immunohistochemistry analysis of paraffin-embedded human Kidney tissues with AEC staining using A1BG Monoclonal Antibody.