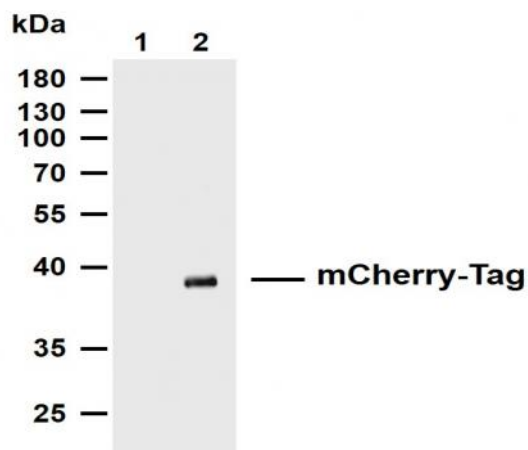


mCherry-Tag(PNF001) Nb-FC recombinant antibody

Catalog No :	YA0648
Reactivity :	Species independent
Applications :	WB
Target :	mCherry-Tag
Immunogen :	Recombinant Protein of mCherry-Tag
Specificity :	The antibody detects mCherry tag fusion proteins.
Formulation :	Phosphate-buffered solution
Source :	Camel, chimeric fusion of Nanobody (VHH) and mouse IgG1 Fc domain , recombinantly produced from 293F cell
Dilution :	WB 1:1000-5000
Purification :	Recombinant Expression and Affinity purified
Storage Stability :	-15°C to -25°C/1 year(Avoid freeze / thaw cycles)
Background :	mCherry is derived from proteins originally isolated from Cnidarians (jelly fish, sea anemones and corals), and is used as a fluorescent tracer in trasfection and transgenic experiments. The prototype for these fluorescent proteins is Green Fluorescent Protein (GFP), which is a ~27kDa protein isolated originally from the jellyfish <i>Aequoria victoria</i> . The mCherry protein is derived from DsRed, a red fluorescent protein related to GFP isolated from so-called disc corals of the genus <i>Discosoma</i> .
Tag :	recombinant
Sort :	17601
No4 :	1
Speciality :	Nanobody

Modifications : Unmodified

Products Images



Whole extracts were separated by 10% SDS-PAGE, and the membrane was blotted with anti-mCherry-Tag(PNF001)antibody. The HRP-conjugated Goat anti-Mouse IgG(H + L) antibody was used to detect the antibody. Lane 1: BL21 transfected with an empty expression vector Lane 2: BL21 transfected with a mCherry tagged protein Predicted band size: 38kDa Observed band size: 38kDa