

Histone H3 (Mono Methyl Lys4) Polyclonal Antibody

Catalog No :	YH0003
Reactivity :	Human;Mouse;Rat
Applications :	WB;IHC;IF;ELISA
Target :	Histone H3
Fields :	>>Neutrophil extracellular trap formation;>>Alcoholism;>>Shigellosis;>>Transcriptional misregulation in cancer;>>Systemic lupus erythematosus
Gene Name :	HIST1H3A/HIST1H3/HIST1H3C/HIST1H3D/HIST1H3E/HIST1H3F/HIST1H3G/HIST1H3H/HIST1H3I/HIST1H3J/HIST2H3A/HIST2H3C/HIST2H3D/H3F3A/H3F3B/H3F3C
Protein Name :	Histone H3.1/Histone H3.2/Histone H3.3/Histone H3.3C
Human Gene Id :	8350/8351/8352/8353/8354/8355/8356/8357/8358/8968/126961/333932/653604/3020/3021/440093
Human Swiss Prot No :	P68431/Q71DI3/P84243/Q6NXT2
Mouse Gene Id :	319152/15077/15078/625328
Rat Gene Id :	291159/100361558
Rat Swiss Prot No :	Q6LED0/P84245
Immunogen :	Synthesized peptide derived from human Histone H3 around the mono-methylation site of K4.
Specificity :	Mono-Methyl-Histone H3 (K4) Polyclonal Antibody detects endogenous levels of Histone H3 protein only when mono-methylated at K4.
Formulation :	Liquid in PBS containing 50% glycerol, 0.5% BSA and 0.02% sodium azide.
Source :	Polyclonal, Rabbit,IgG

Dilution : WB 1:500 - 1:2000. IHC: 1:100-300 ELISA: 1:20000.. IF 1:50-200

Purification : The antibody was affinity-purified from rabbit antiserum by affinity-chromatography using epitope-specific immunogen.

Concentration : 1 mg/ml

Storage Stability : -15°C to -25°C/1 year(Do not lower than -25°C)

Observed Band : 17kD

Cell Pathway : Systemic lupus erythematosus;

Background : Histones are basic nuclear proteins that are responsible for the nucleosome structure of the chromosomal fiber in eukaryotes. This structure consists of approximately 146 bp of DNA wrapped around a nucleosome, an octamer composed of pairs of each of the four core histones (H2A, H2B, H3, and H4). The chromatin fiber is further compacted through the interaction of a linker histone, H1, with the DNA between the nucleosomes to form higher order chromatin structures. This gene is intronless and encodes a replication-dependent histone that is a member of the histone H3 family. Transcripts from this gene lack polyA tails; instead, they contain a palindromic termination element. This gene is found in the large histone gene cluster on chromosome 6p22-p21.3. [provided by RefSeq, Aug 2015],

Function : caution:Was originally (PubMed:2587222) thought to originate from mouse.,developmental stage:Expressed during S phase, then expression strongly decreases as cell division slows down during the process of differentiation.,function:Core component of nucleosome. Nucleosomes wrap and compact DNA into chromatin, limiting DNA accessibility to the cellular machineries which require DNA as a template. Histones thereby play a central role in transcription regulation, DNA repair, DNA replication and chromosomal stability. DNA accessibility is regulated via a complex set of post-translational modifications of histones, also called histone code, and nucleosome remodeling.,mass spectrometry:Monoisotopic with N-acetylserine PubMed:16457589,miscellaneous:This histone is only present in mammals and is enriched in acetylation of Lys-15 and dimethylation of Lys-10 (H3K9me2).,PTM:Acetylation is generally I

Subcellular Location : Nucleus. Chromosome.

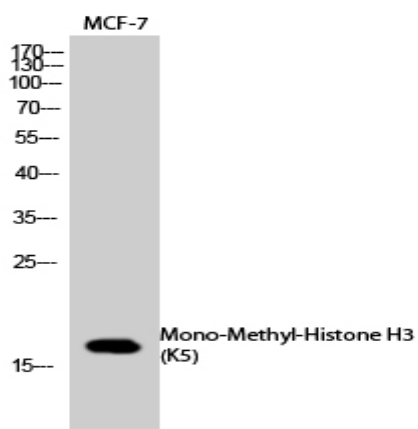
Expression : Blood,Epithelium,Kidney,Lung,Ovary,Spleen,Uterus,

Tag : hot

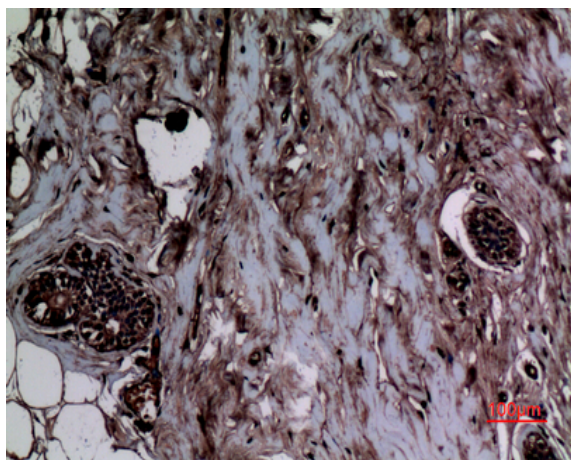
Sort : 7545

No4 :	<u>1</u>
Host :	<u>Rabbit</u>
Modifications :	<u>Methyl</u>

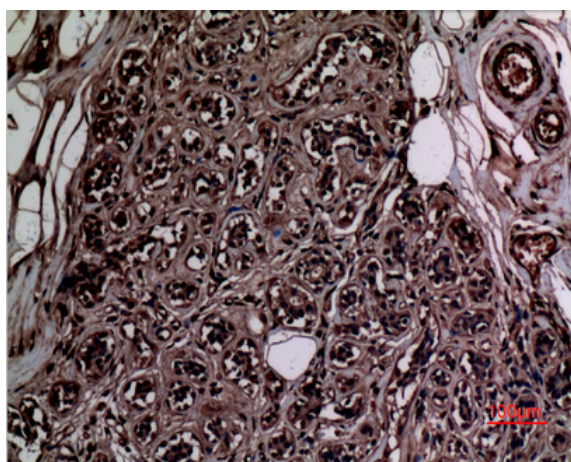
Products Images



Western Blot analysis of MCF-7 cells using Mono-Methyl-Histone H3 (K5) Polyclonal Antibody. Secondary antibody(catalog#:RS0002) was diluted at 1:20000



Immunohistochemical analysis of paraffin-embedded human-breast, antibody was diluted at 1:100



Immunohistochemical analysis of paraffin-embedded human-breast, antibody was diluted at 1:100