

**Stat2 (Acetyl Lys384) rabbit pAb**

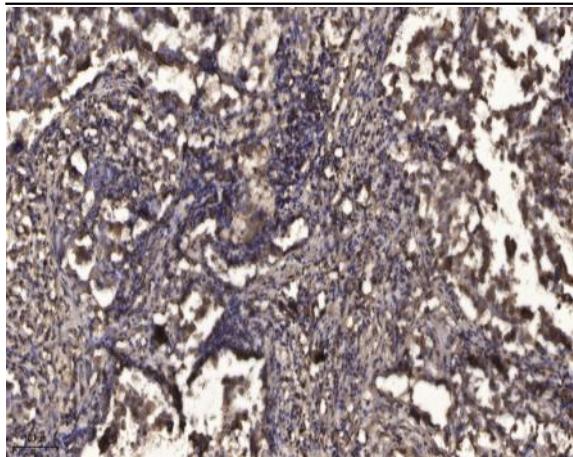
<b>Catalog No :</b>	YK0174
<b>Reactivity :</b>	Human;Rat
<b>Applications :</b>	WB;ELISA;IHC
<b>Target :</b>	Stat2
<b>Fields :</b>	>>Chemokine signaling pathway;>>Necroptosis;>>Osteoclast differentiation;>>NOD-like receptor signaling pathway;>>C-type lectin receptor signaling pathway;>>JAK-STAT signaling pathway;>>Hepatitis C;>>Hepatitis B;>>Measles;>>Influenza A;>>Human papillomavirus infection;>>Kaposi sarcoma-associated herpesvirus infection;>>Herpes simplex virus 1 infection;>>Epstein-Barr virus infection;>>Coronavirus disease - COVID-19;>>Pathways in cancer
<b>Gene Name :</b>	STAT2
<b>Protein Name :</b>	Stat2 (Acetyl Lys384)
<b>Human Gene Id :</b>	6773
<b>Human Swiss Prot No :</b>	P52630
<b>Mouse Swiss Prot No :</b>	Q9WVL2
<b>Immunogen :</b>	Synthesized peptide derived from human Stat2 (Acetyl Lys384)
<b>Specificity :</b>	This antibody detects endogenous levels of Human,Rat Stat2 (Acetyl Lys384)
<b>Formulation :</b>	Liquid in PBS containing 50% glycerol, 0.5% BSA and 0.02% sodium azide.
<b>Source :</b>	Polyclonal, Rabbit,IgG
<b>Dilution :</b>	WB 1:500-2000;IHC 1:50-300; ELISA 2000-20000
<b>Purification :</b>	The antibody was affinity-purified from rabbit serum by affinity-chromatography using specific immunogen.

---

<b>Concentration :</b>	1 mg/ml
<b>Storage Stability :</b>	-15°C to -25°C/1 year(Do not lower than -25°C)
<b>Observed Band :</b>	73kD
<b>Background :</b>	<p>function:Signal transducer and activator of transcription that mediates signaling by type I IFNs (IFN-alpha and IFN-beta). Following type I IFN binding to cell surface receptors, Jak kinases (TYK2 and JAK1) are activated, leading to tyrosine phosphorylation of STAT1 and STAT2. The phosphorylated STATs dimerize, associate with ISGF3G/IRF-9 to form a complex termed ISGF3 transcription factor, that enters the nucleus. ISGF3 binds to the IFN stimulated response element (ISRE) to activate the transcription of interferon stimulated genes, which drive the cell in an antiviral state.,PTM:Tyrosine phosphorylated in response to IFN-alpha.,similarity:Belongs to the transcription factor STAT family.,similarity:Contains 1 SH2 domain.,subcellular location:Translocated into the nucleus upon activation by IFN-alpha/beta.,subunit:Interacts with ISGF3G/IRF-9 in the cytoplasm. Heterodimer with STAT1 upon IFN-alpha/beta induced phosphorylation. Interacts with CRSP2 and CRSP6. Interacts with Simian virus 5 protein V and rabies virus phosphoprotein.,</p>
<b>Function :</b>	<p>transcription, regulation of transcription, DNA-dependent, regulation of transcription from RNA polymerase II promoter,intracellular signaling cascade, protein kinase cascade, JAK-STAT cascade, response to virus, regulation of transcription, regulation of RNA metabolic process,</p>
<b>Subcellular Location :</b>	<p>Cytoplasm . Nucleus . Translocated into the nucleus upon activation by IFN-alpha/beta. .</p>
<b>Sort :</b>	16671
<b>No4 :</b>	1
<b>Host :</b>	Rabbit
<b>Modifications :</b>	Acetyl

---

## Products Images



Immunohistochemical analysis of paraffin-embedded human Squamous cell carcinoma of lung. 1, Antibody was diluted at 1:200(4° overnight). 2, Tris-EDTA,pH9.0 was used for antigen retrieval. 3,Secondary antibody was diluted at 1:200(room temperature, 45min).