

MYH-pan (Acetyl Lys505) rabbit pAb

Catalog No :	YK0162
Reactivity :	Human;Mouse;Rat
Applications :	WB;ELISA;IHC
Target :	MYH-pan
Gene Name :	MYH1
Protein Name :	MYH-pan (Acetyl Lys505)
Human Gene Id :	4619
Human Swiss Prot No :	P12882/Q9UKX2/P11055/Q9Y623/P13533/P12883/P13535
Mouse Gene Id :	17879
Mouse Swiss Prot No :	Q5SX40
Immunogen :	Synthesized peptide derived from human MYH-pan (Acetyl Lys505)
Specificity :	This antibody detects endogenous levels of Human,Mouse,Rat MYH-pan (Acetyl Lys505)
Formulation :	Liquid in PBS containing 50% glycerol, 0.5% BSA and 0.02% sodium azide.
Source :	Polyclonal, Rabbit,IgG
Dilution :	WB 1:500-2000;IHC 1:50-300; ELISA 2000-20000
Purification :	The antibody was affinity-purified from rabbit serum by affinity-chromatography using specific immunogen.
Concentration :	1 mg/ml
Storage Stability :	-15°C to -25°C/1 year(Do not lower than -25°C)

Observed Band : 77kD**Background :**

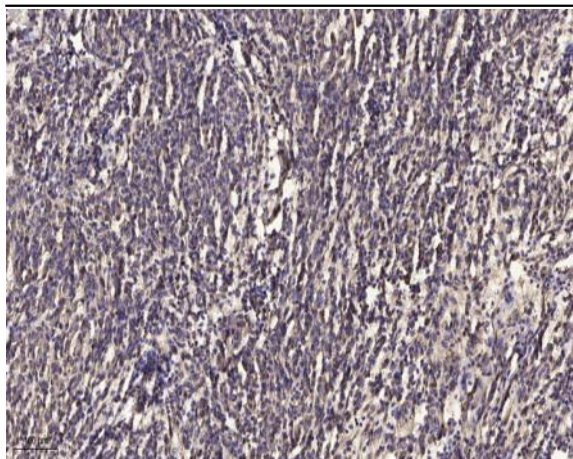
Myosin is a major contractile protein which converts chemical energy into mechanical energy through the hydrolysis of ATP. Myosin is a hexameric protein composed of a pair of myosin heavy chains (MYH) and two pairs of nonidentical light chains. Myosin heavy chains are encoded by a multigene family. In mammals at least 10 different myosin heavy chain (MYH) isoforms have been described from striated, smooth, and nonmuscle cells. These isoforms show expression that is spatially and temporally regulated during development. [provided by RefSeq, Jul 2008],

Function :

domain:The rodlike tail sequence is highly repetitive, showing cycles of a 28-residue repeat pattern composed of 4 heptapeptides, characteristic for alpha-helical coiled coils.,function:Muscle contraction.,miscellaneous:Each myosin heavy chain can be split into 1 light meromyosin (LMM) and 1 heavy meromyosin (HMM). It can later be split further into 2 globular subfragments (S1) and 1 rod-shaped subfragment (S2).,similarity:Contains 1 IQ domain.,similarity:Contains 1 myosin head-like domain.,subcellular location:Thick filaments of the myofibrils.,subunit:Muscle myosin is a hexameric protein that consists of 2 heavy chain subunits (MHC), 2 alkali light chain subunits (MLC) and 2 regulatory light chain subunits (MLC-2).,

Subcellular Location : Cytoplasm, myofibril. Thick filaments of the myofibrils.**Sort :** 10466**No4 :** 1**Host :** Rabbit**Modifications :** Acetyl

Products Images



Immunohistochemical analysis of paraffin-embedded human meningioma. 1, Antibody was diluted at 1:200(4° overnight). 2, Tris-EDTA,pH9.0 was used for antigen retrieval. 3,Secondary antibody was diluted at 1:200(room temperature, 45min).