

KLF13 (Acetyl Lys166) rabbit pAb

| | |
|------------------------------|---|
| Catalog No : | YK0152 |
| Reactivity : | Human;Mouse |
| Applications : | WB;IHC |
| Target : | KLF13 |
| Gene Name : | KLF13 BTEB3 NSLP1 |
| Protein Name : | KLF13 (Acetyl Lys166) |
| Human Gene Id : | 51621 |
| Human Swiss Prot No : | Q9Y2Y9 |
| Mouse Gene Id : | 50794 |
| Mouse Swiss Prot No : | Q9JJZ6 |
| Immunogen : | Synthesized peptide derived from human KLF13 (Acetyl Lys166) |
| Specificity : | This antibody detects endogenous levels of Human,Mouse KLF13 (Acetyl Lys166) |
| Formulation : | Liquid in PBS containing 50% glycerol, 0.5% BSA and 0.02% sodium azide. |
| Source : | Polyclonal, Rabbit,IgG |
| Dilution : | WB 1:500-2000;IHC 1:50-300 |
| Purification : | The antibody was affinity-purified from rabbit serum by affinity-chromatography using specific immunogen. |
| Concentration : | 1 mg/ml |
| Storage Stability : | -15°C to -25°C/1 year(Do not lower than -25°C) |

Observed Band : 32kD

Background : KLF13 belongs to a family of transcription factors that contain 3 classical zinc finger DNA-binding domains consisting of a zinc atom tetrahedrally coordinated by 2 cysteines and 2 histidines (C2H2 motif). These transcription factors bind to GC-rich sequences and related GT and CACCC boxes (Schoy et al., 2000 [PubMed 11087666]).[supplied by OMIM, Mar 2008],

Function : domain:The Ala/Pro-rich domain may contain discrete activation and repression subdomains and also can mediate protein-protein interactions.,function:Represses transcription by binding to the BTE site, a GC-rich DNA element, in competition with the activator SP1. It also represses transcription by interacting with the corepressor Sin3A and HDAC1. Activates RANTES expression in T-cells.,PTM:Phosphorylated.,similarity:Belongs to the Sp1 C2H2-type zinc-finger protein family.,similarity:Contains 3 C2H2-type zinc fingers.,tissue specificity:Ubiquitous.,

Subcellular Location : Nucleus.

Expression : Ubiquitous.

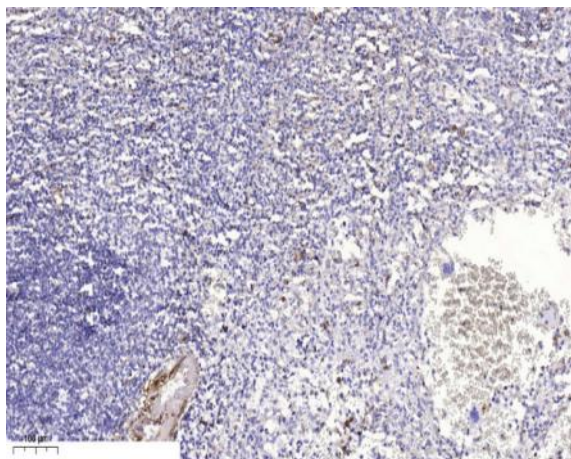
Sort : 8947

No4 : 1

Host : Rabbit

Modifications : Acetyl

Products Images



Immunohistochemical analysis of paraffin-embedded human spleen. 1, Antibody was diluted at 1:200(4° overnight). 2, Tris-EDTA,pH9.0 was used for antigen retrieval. 3,Secondary antibody was diluted at 1:200(room temperature, 45min).