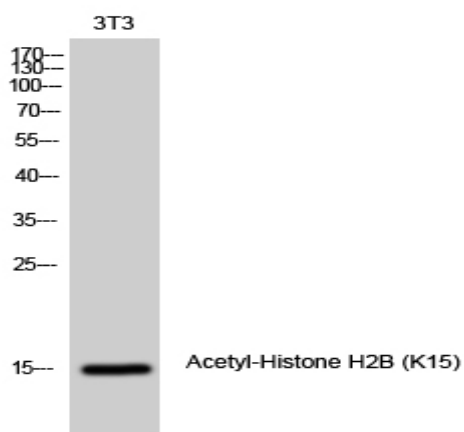


Histone H2B (Acetyl Lys15) Polyclonal Antibody

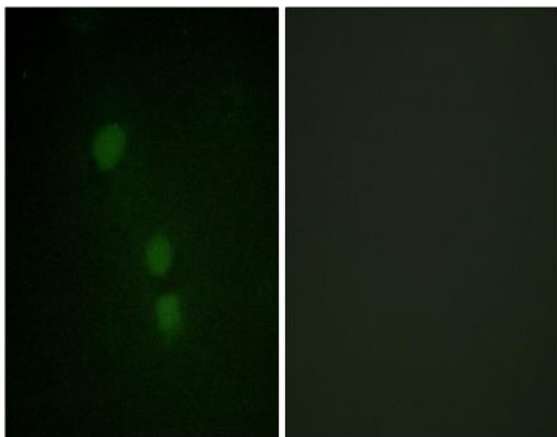
Catalog No :	YK0005
Reactivity :	Human;Mouse
Applications :	WB;IHC;IF;ELISA
Target :	Histone H2B
Fields :	>>Neutrophil extracellular trap formation;>>Alcoholism;>>Viral carcinogenesis;>>Systemic lupus erythematosus
Gene Name :	H2BFS
Protein Name :	Histone H2B type F-S
Human Gene Id :	54145
Human Swiss Prot No :	P57053
Immunogen :	The antiserum was produced against synthesized peptide derived from human Histone H2B around the acetylated site of Lys15. AA range:1-50
Specificity :	Acetyl-Histone H2B (K15) Polyclonal Antibody detects endogenous levels of Histone H2B protein only when acetylated at K15.
Formulation :	Liquid in PBS containing 50% glycerol, 0.5% BSA and 0.02% sodium azide.
Source :	Polyclonal, Rabbit,IgG
Dilution :	WB 1:500 - 1:2000. IHC 1:100 - 1:300. IF 1:200 - 1:1000. ELISA: 1:5000. Not yet tested in other applications.
Purification :	The antibody was affinity-purified from rabbit antiserum by affinity-chromatography using epitope-specific immunogen.
Concentration :	1 mg/ml
Storage Stability :	-15°C to -25°C/1 year(Do not lower than -25°C)

Observed Band :	20kD
Cell Pathway :	Protein_Acetylation
Background :	H2BFS (H2B Histone Family Member S (Pseudogene)) is a Pseudogene. Diseases associated with H2BFS include endometrial stromal sarcoma. Among its related pathways are Packaging Of Telomere Ends. GO annotations related to this gene include sequence-specific DNA binding and protein heterodimerization activity. An important paralog of this gene is HIST1H2BH.
Function :	DNA packaging, chromatin organization, chromatin assembly or disassembly, nucleosome assembly, defense response, response to bacterium, chromatin assembly, cellular macromolecular complex subunit organization, cellular macromolecular complex assembly, nucleosome organization, defense response to bacterium, macromolecular complex subunit organization, chromosome organization, macromolecular complex assembly, protein-DNA complex assembly,
Subcellular Location :	Nucleus. Chromosome.
Tag :	orthogonal
Sort :	7456
No4 :	1
Host :	Rabbit
Modifications :	Acetyl

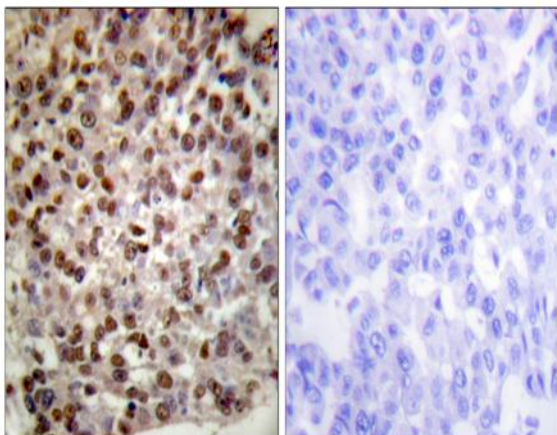
Products Images



Western Blot analysis of 3T3 cells using Acetyl-Histone H2B (K15) Polyclonal Antibody diluted at 1:1000. Secondary antibody(catalog#:RS0002) was diluted at 1:20000



Immunofluorescence analysis of HeLa cells, using Histone H2B (Acetyl-Lys15) Antibody. The picture on the right is blocked with the synthesized peptide.



Immunohistochemistry analysis of paraffin-embedded human breast carcinoma tissue, using Histone H2B (Acetyl-Lys15) Antibody. The picture on the right is blocked with the synthesized peptide.