

**STAT4 (Phospho Ser721) Rabbit pAb**

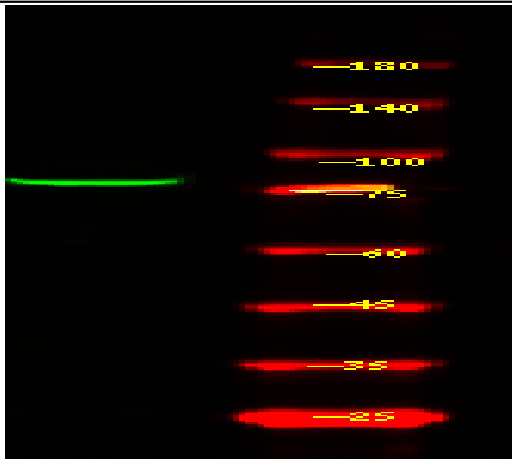
<b>Catalog No :</b>	YP1857
<b>Reactivity :</b>	Human;Mouse
<b>Applications :</b>	IHC;WB
<b>Target :</b>	Stat4
<b>Fields :</b>	>>Necroptosis;>>JAK-STAT signaling pathway;>>Th1 and Th2 cell differentiation;>>Hepatitis B;>>Pathways in cancer;>>Inflammatory bowel disease
<b>Gene Name :</b>	STAT4
<b>Protein Name :</b>	Signal transducer and activator of transcription 4
<b>Human Gene Id :</b>	6775
<b>Human Swiss Prot No :</b>	Q14765
<b>Mouse Gene Id :</b>	20849
<b>Mouse Swiss Prot No :</b>	P42228
<b>Immunogen :</b>	Synthesized peptide derived from human STAT4 (Phospho Ser721)
<b>Specificity :</b>	This antibody detects endogenous levels of STAT4 (Phospho Ser721) Rabbit pAb at Human, Mouse
<b>Formulation :</b>	Liquid in PBS containing 50% glycerol, and 0.02% sodium azide.
<b>Source :</b>	Rabbit,polyclonal
<b>Dilution :</b>	WB 1:500-2000 IHC 1:50-200
<b>Purification :</b>	The antibody was affinity-purified from rabbit serum by affinity-chromatography using specific immunogen.

---

<b>Concentration :</b>	1 mg/ml
<b>Storage Stability :</b>	-15°C to -25°C/1 year(Do not lower than -25°C)
<b>Observed Band :</b>	86kD
<b>Background :</b>	signal transducer and activator of transcription 4(STAT4) Homo sapiens The protein encoded by this gene is a member of the STAT family of transcription factors. In response to cytokines and growth factors, STAT family members are phosphorylated by the receptor associated kinases, and then form homo- or heterodimers that translocate to the cell nucleus where they act as transcription activators. This protein is essential for mediating responses to IL12 in lymphocytes, and regulating the differentiation of T helper cells. Mutations in this gene may be associated with systemic lupus erythematosus and rheumatoid arthritis. Alternate splicing results in multiple transcript variants that encode the same protein. [provided by RefSeq, Aug 2011],
<b>Function :</b>	disease:Genetic variations in STAT4 are associated with susceptibility to rheumatoid arthritis (RA) [MIM:180300]. Rheumatoid arthritis is a complex, multifactorial disorder. It is one of the most common autoimmune diseases and it is characterized by inflammation of synovial tissue and joint destruction.,disease:Genetic variations in STAT4 are associated with susceptibility to systemic lupus erythematosus type 11 (SLEB11) [MIM:612253]. Systemic lupus erythematosus (SLE) is a chronic autoimmune disease with a complex genetic basis. SLE is an inflammatory, and often febrile multisystemic disorder of connective tissue characterized principally by involvement of the skin, joints, kidneys, and serosal membranes. It is thought to represent a failure of the regulatory mechanisms of the autoimmune system.,function:Carries out a dual function: signal transduction and activation of transcription. I
<b>Subcellular Location :</b>	Cytoplasm. Nucleus. Translocated into the nucleus in response to phosphorylation.
<b>Tag :</b>	orthogonal
<b>Sort :</b>	999
<b>No4 :</b>	1
<b>Host :</b>	Rabbit
<b>Modifications :</b>	Phospho

---

**Products Images**



Western Blot analysis of 1 HeLa cell, 2 LPS 100ng/mL 30min treated ,using primary antibody at 1:1000 dilution. Secondary antibody(catalog#:RS23920) was diluted at 1:10000