

**SHC1 (Phospho Tyr349+Tyr350) Rabbit pAb**

<b>Catalog No :</b>	YP1852
<b>Reactivity :</b>	Human;Mouse;Rat
<b>Applications :</b>	IHC;WB
<b>Target :</b>	Shc
<b>Fields :</b>	>>EGFR tyrosine kinase inhibitor resistance;>>Endocrine resistance;>>ErbB signaling pathway;>>Ras signaling pathway;>>Chemokine signaling pathway;>>Phospholipase D signaling pathway;>>Focal adhesion;>>Natural killer cell mediated cytotoxicity;>>Neurotrophin signaling pathway;>>Insulin signaling pathway;>>Estrogen signaling pathway;>>Prolactin signaling pathway;>>Relaxin signaling pathway;>>Growth hormone synthesis, secretion and action;>>Alcoholism;>>Bacterial invasion of epithelial cells;>>MicroRNAs in cancer;>>Glioma;>>Chronic myeloid leukemia;>>Breast cancer;>>Hepatocellular carcinoma;>>Gastric cancer
<b>Gene Name :</b>	SHC1 SHC SHCA
<b>Protein Name :</b>	SHC-transforming protein 1 (SHC-transforming protein 3) (SHC-transforming protein A) (Src homology 2 domain-containing-transforming protein C1) (SH2 domain protein C1)
<b>Human Gene Id :</b>	6464
<b>Human Swiss Prot No :</b>	P29353
<b>Mouse Gene Id :</b>	20416
<b>Mouse Swiss Prot No :</b>	P98083
<b>Rat Gene Id :</b>	85385
<b>Rat Swiss Prot No :</b>	Q5M824
<b>Immunogen :</b>	Synthesized peptide derived from human SHC1 (Phospho Tyr349+Tyr350)
<b>Specificity :</b>	This antibody detects endogenous levels of SHC1 (Phospho Tyr349+Tyr350)

Rabbit pAb at Human, Mouse, Rat

---

**Formulation :** Liquid in PBS containing 50% glycerol, and 0.02% sodium azide.

---

**Source :** Rabbit, polyclonal

---

**Dilution :** WB 1:500-2000 IHC 1:50-200

---

**Purification :** The antibody was affinity-purified from rabbit serum by affinity-chromatography using specific immunogen.

---

**Concentration :** 1 mg/ml

---

**Storage Stability :** -15°C to -25°C/1 year (Do not lower than -25°C)

---

**Observed Band :** 66(p66 isoform), 52(p52 isoform), 46(p46 isoform)kD

---

**Background :** SHC adaptor protein 1 (SHC1) Homo sapiens This gene encodes three main isoforms that differ in activities and subcellular location. While all three are adapter proteins in signal transduction pathways, the longest (p66Shc) may be involved in regulating life span and the effects of reactive oxygen species. The other two isoforms, p52Shc and p46Shc, link activated receptor tyrosine kinases to the Ras pathway by recruitment of the GRB2/SOS complex. p66Shc is not involved in Ras activation. Unlike the other two isoforms, p46Shc is targeted to the mitochondrial matrix. Several transcript variants encoding different isoforms have been found for this gene. [provided by RefSeq, Feb 2011],

---

**Function :** domain: In response to a variety of growth factors, isoform p46Shc and isoform p52Shc bind to phosphorylated Trk receptors through their phosphotyrosine binding (PID) and/or SH2 domains. The PID and SH2 domains bind to specific phosphorylated tyrosine residues in the Asn-Pro-Xaa-Tyr(P) motif of the Trk receptors. Isoform p46Shc and isoform p52Shc are in turn phosphorylated on three tyrosine residues within the extended proline-rich domain. These phosphotyrosines act as docking site for GRB2 and thereby are involved in Ras activation. function: Signaling adapter that couples activated growth factor receptors to signaling pathway. Isoform p46Shc and isoform p52Shc, once phosphorylated, couple activated receptor tyrosine kinases to Ras via the recruitment of the GRB2/SOS complex and are implicated in the cytoplasmic propagation of mitogenic signals. Isoform p46Shc and isoform p52Shc may thus

---

**Subcellular Location :** Cytoplasm.; [Isoform p46Shc]: Mitochondrion matrix . Localized to the mitochondria matrix. Targeting of isoform p46Shc to mitochondria is mediated by its first 32 amino acids, which behave as a bona fide mitochondrial targeting sequence. Isoform p52Shc and isoform p66Shc, that contain the same sequence but more internally located, display a different subcellular localization.; [Isoform p66Shc]: Mitochondrion . In case of oxidative conditions, phosphorylation at 'Ser-36' of isoform p66Shc, leads to mitochondrial accumulation. .

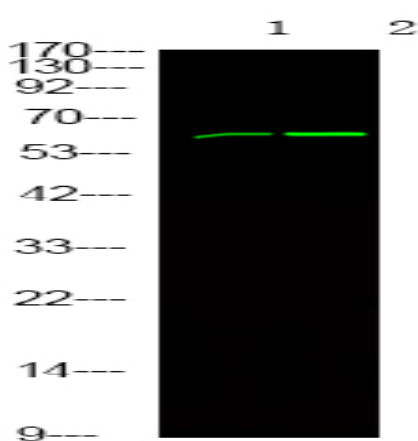
---

---

<b>Expression :</b>	<u>Widely expressed. Expressed in neural stem cells but absent in mature neurons.</u>
<b>Tag :</b>	<u>orthogonal</u>
<b>Sort :</b>	<u>999</u>
<b>No4 :</b>	<u>1</u>
<b>Host :</b>	<u>Rabbit</u>
<b>Modifications :</b>	<u>Phospho</u>

---

## Products Images



Western Blot analysis of 1 MCF-7 cell 2 Serum-free treated ,using primary antibody at 1:1000 dilution. Secondary antibody(catalog#:RS23920) was diluted at 1:10000