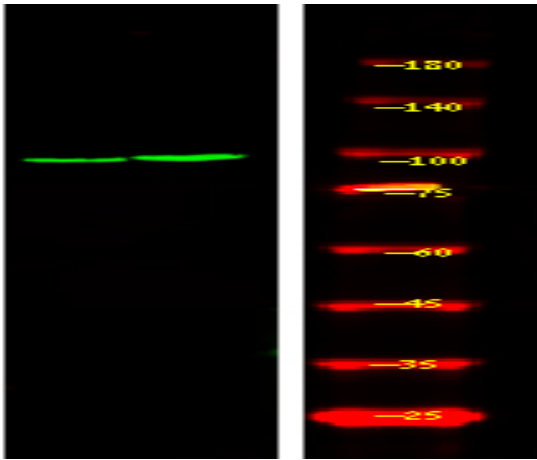


RBBP8 (Phospho Ser664) Rabbit pAb

Catalog No :	YP1822
Reactivity :	Human;Mouse;Rat
Applications :	IHC;WB
Target :	CTIP
Fields :	>>Homologous recombination
Gene Name :	RBBP8 CTIP
Protein Name :	DNA endonuclease RBBP8 (EC 3.1.-.-) (CtBP-interacting protein) (CtIP) (Retinoblastoma-binding protein 8) (RBBP-8) (Retinoblastoma-interacting protein and myosin-like) (RIM) (Sporulation in the absence)
Human Gene Id :	5932
Human Swiss Prot No :	Q99708
Mouse Gene Id :	225182
Mouse Swiss Prot No :	Q80YR6
Rat Gene Id :	291787
Rat Swiss Prot No :	B1WC58
Immunogen :	Synthesized peptide derived from human RBBP8 (Phospho Ser664)
Specificity :	This antibody detects endogenous levels of RBBP8 (Phospho Ser664) Rabbit pAb at Human, Mouse,Rat
Formulation :	Liquid in PBS containing 50% glycerol, and 0.02% sodium azide.
Source :	Rabbit,polyclonal
Dilution :	WB 1:500-2000 IHC 1:50-200

Purification :	The antibody was affinity-purified from rabbit serum by affinity-chromatography using specific immunogen.
Concentration :	1 mg/ml
Storage Stability :	-15°C to -25°C/1 year(Do not lower than -25°C)
Observed Band :	100kD
Background :	RB binding protein 8, endonuclease(RBBP8) Homo sapiens The protein encoded by this gene is a ubiquitously expressed nuclear protein. It is found among several proteins that bind directly to retinoblastoma protein, which regulates cell proliferation. This protein complexes with transcriptional co-repressor CTBP. It is also associated with BRCA1 and is thought to modulate the functions of BRCA1 in transcriptional regulation, DNA repair, and/or cell cycle checkpoint control. It is suggested that this gene may itself be a tumor suppressor acting in the same pathway as BRCA1. Three transcript variants encoding two different isoforms have been found for this gene. More transcript variants exist, but their full-length natures have not been determined. [provided by RefSeq, Jul 2008],
Function :	function:May modulate the functions ascribed to BRCA1 in transcriptional regulation, DNA repair, and/or cell cycle checkpoint control.,PTM:Phosphorylated upon DNA damage, probably by ATM or ATR. Hyperphosphorylation upon ionizing radiation results in dissociation from BRCA1.,PTM:Ubiquitinated; mediated by SIAH1 and leading to its subsequent proteasomal degradation.,subcellular location:Predominantly nuclear.,subunit:Interacts with CTBP, with the C-terminal (BRCT) domains of BRCA1, and with the retinoblastoma protein.,
Subcellular Location :	Nucleus . Chromosome . Associates with sites of DNA damage in S/G2 phase (PubMed:10764811, PubMed:25349192). Ubiquitinated RBBP8 binds to chromatin following DNA damage (PubMed:16818604). .
Expression :	Expressed in ER-positive breast cancer lines, but tends to be down-regulated ER-negative cells (at protein level).
Tag :	orthogonal
Sort :	999
No4 :	1
Host :	Rabbit
Modifications :	Phospho

Products Images



Western Blot analysis of HepG2 cell, 2 Serum-free treated ,using primary antibody at 1:1000 dilution. Secondary antibody(catalog#:RS23920) was diluted at 1:10000