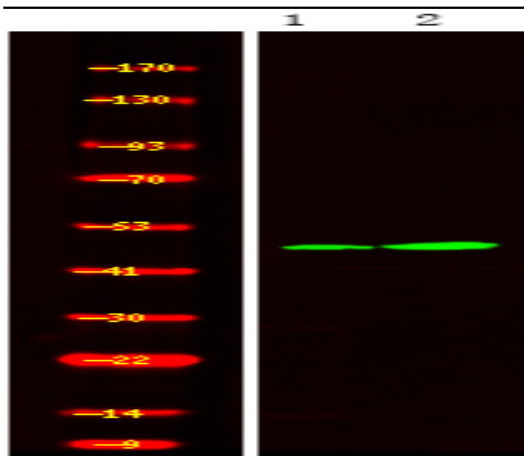


STYK1/NOK (Phospho Tyr327) rabbit pAb

Catalog No :	YP1794
Reactivity :	Human;Mouse;Rat
Applications :	WB
Target :	STYK1/NOK
Gene Name :	STYK1 NOK
Protein Name :	STYK1/NOK (Phospho-Tyr327)
Human Gene Id :	55359
Human Swiss Prot No :	Q6J9G0
Mouse Gene Id :	243659
Mouse Swiss Prot No :	Q6J9G1
Immunogen :	Synthesized peptide derived from human STYK1/NOK (Phospho-Tyr327)
Specificity :	This antibody detects endogenous levels of STYK1/NOK (Phospho-Tyr327) at Human, Mouse,Rat
Formulation :	Liquid in PBS containing 50% glycerol, 0.5% BSA and 0.02% sodium azide.
Source :	Polyclonal, Rabbit,IgG
Dilution :	WB 1:500-2000
Purification :	The antibody was affinity-purified from rabbit serum by affinity-chromatography using specific immunogen.
Concentration :	1 mg/ml
Storage Stability :	-15°C to -25°C/1 year(Do not lower than -25°C)

Observed Band :	47kD
Background :	Receptor protein tyrosine kinases, like STYK1, play important roles in diverse cellular and developmental processes, such as cell proliferation, differentiation, and survival (Liu et al., 2004 [PubMed 15150103]).[supplied by OMIM, Mar 2008],
Function :	catalytic activity:ATP + a [protein]-L-tyrosine = ADP + a [protein]-L-tyrosine phosphate.,function:Probable tyrosine protein-kinase, which has strong transforming capabilities on a variety of cell lines. When overexpressed, it can also induce tumor cell invasion as well as metastasis in distant organs. May act by activating both MAP kinase and phosphatidylinositol 3'-kinases (PI3K) pathways.,similarity:Belongs to the protein kinase superfamily. Tyr protein kinase family.,similarity:Contains 1 protein kinase domain.,tissue specificity:Widely expressed. Highly expressed in brain, placenta and prostate. Expressed in tumor cells such as hepatoma cells LO2, cervix carcinoma cells HeLa, ovary cancer cells Ho8910 and chronic myelogenous leukemia cells K562, but not in other tumor cells such as epidermoid carcinoma (A431). Undetectable in most normal lung tissues, widely expressed in lung cancer
Subcellular Location :	Membrane ; Single-pass membrane protein .
Expression :	Widely expressed. Highly expressed in brain, placenta and prostate. Expressed in tumor cells such as hepatoma cells L-02, cervix carcinoma cells HeLa, ovary cancer cells Ho8910 and chronic myelogenous leukemia cells K-562, but not in other tumor cells such as epidermoid carcinoma (A-431). Undetectable in most normal lung tissues, widely expressed in lung cancers.
Tag :	orthogonal
Sort :	25273
No4 :	1
Host :	Rabbit
Modifications :	Phospho

Products Images



Western Blot analysis of 1 HeLa cell, 2 LPS 100ng/mL 30min treated ,using primary antibody at 1:1000 dilution. Secondary antibody(catalog#:RS23920) was diluted at 1:10000