

GRK1/2 (Phospho Tyr13) rabbit pAb

Catalog No :	YP1789
Reactivity :	Human;Mouse;Rat
Applications :	WB
Target :	GRK1/2
Fields :	>>Chemokine signaling pathway;>>Endocytosis;>>Hedgehog signaling pathway;>>Glutamatergic synapse;>>Olfactory transduction;>>Morphine addiction
Gene Name :	ADRBK1 BARK BARK1 GRK2
Protein Name :	GRK1/2 (Phospho-Tyr13)
Human Gene Id :	156
Human Swiss Prot No :	P25098
Mouse Swiss Prot No :	Q99MK8
Rat Gene Id :	25238
Rat Swiss Prot No :	P26817
Immunogen :	Synthesized peptide derived from human GRK1/2 (Phospho-Tyr13)
Specificity :	This antibody detects endogenous levels of GRK1/2 (Phospho-Tyr13) at Human, Mouse,Rat
Formulation :	Liquid in PBS containing 50% glycerol, 0.5% BSA and 0.02% sodium azide.
Source :	Polyclonal, Rabbit,IgG
Dilution :	WB 1:500-2000
Purification :	The antibody was affinity-purified from rabbit serum by affinity-chromatography

using specific immunogen.

Concentration : 1 mg/ml

Storage Stability : -15°C to -25°C/1 year(Do not lower than -25°C)

Molecularweight : 76kD

Background : The product of this gene phosphorylates the beta-2-adrenergic receptor and appears to mediate agonist-specific desensitization observed at high agonist concentrations. This protein is an ubiquitous cytosolic enzyme that specifically phosphorylates the activated form of the beta-adrenergic and related G-protein-coupled receptors. Abnormal coupling of beta-adrenergic receptor to G protein is involved in the pathogenesis of the failing heart. [provided by RefSeq, Jul 2008],

Function : catalytic activity:ATP + [beta-adrenergic receptor] = ADP + [beta-adrenergic receptor] phosphate.,catalytic activity:ATP + a protein = ADP + a phosphoprotein.,function:Specifically phosphorylates the agonist-occupied form of the beta-adrenergic and closely related receptors, probably inducing a desensitization of them.,online information:Beta adrenergic receptor kinase entry,similarity:Belongs to the protein kinase superfamily. AGC Ser/Thr protein kinase family. GPRK subfamily.,similarity:Contains 1 AGC-kinase C-terminal domain.,similarity:Contains 1 PH domain.,similarity:Contains 1 protein kinase domain.,similarity:Contains 1 RGS domain.,subunit:Interacts with GIT1 (By similarity). Interacts with, and phosphorylates chemokine-stimulated CCR5.,tissue specificity:Expressed in peripheral blood leukocytes.,

Subcellular Location : Cytoplasm . Cell membrane . Cell junction, synapse, postsynapse . Cell junction, synapse, presynapse .

Expression : Expressed in peripheral blood leukocytes.

Tag : orthogonal

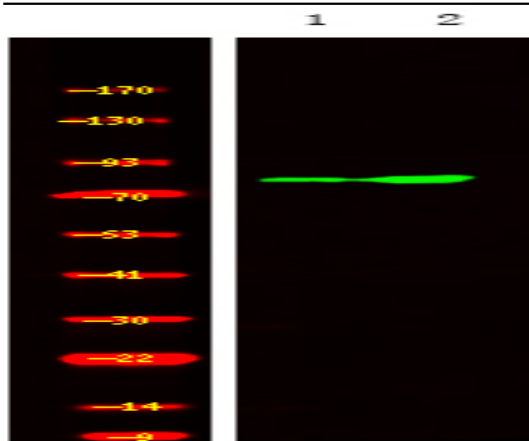
Sort : 25268

No4 : 1

Host : Rabbit

Modifications : Phospho

Products Images



Western Blot analysis of 1 Jurkat cell,2, LPS 100ng/mL 30min treated ,using primary antibody at 1:1000 dilution. Secondary antibody(catalog#:RS23920) was diluted at 1:10000