

Kizuna (Phospho Thr379) rabbit pAb

| | |
|------------------------------|---|
| Catalog No : | YP1784 |
| Reactivity : | Human;Mouse;Rat |
| Applications : | WB |
| Target : | Kizuna |
| Gene Name : | PLK1S1 C20orf19 KIZ NCRNA00153 HT013 |
| Protein Name : | Kizuna (Phospho-Thr379) |
| Human Gene Id : | 55857 |
| Human Swiss Prot No : | Q2M2Z5 |
| Mouse Gene Id : | 228730 |
| Mouse Swiss Prot No : | Q3UXL4 |
| Immunogen : | Synthesized peptide derived from human Kizuna (Phospho-Thr379) |
| Specificity : | This antibody detects endogenous levels of Kizuna (Phospho-Thr379) at Human, Mouse,Rat |
| Formulation : | Liquid in PBS containing 50% glycerol, 0.5% BSA and 0.02% sodium azide. |
| Source : | Polyclonal, Rabbit,IgG |
| Dilution : | WB 1:500-2000 |
| Purification : | The antibody was affinity-purified from rabbit serum by affinity-chromatography using specific immunogen. |
| Concentration : | 1 mg/ml |
| Storage Stability : | -15°C to -25°C/1 year(Do not lower than -25°C) |

Molecularweight : 74kD

Subcellular Location : Cytoplasm, cytoskeleton, microtubule organizing center, centrosome .
Cytoplasm, cytoskeleton, cilium basal body . Localizes to centrosomes throughout the cell cycle. After centrosome duplication, it usually remains associated only with the mother centrosome, containing the older mature centriole and particles surrounding it. During prophase, additional particles accumulate around both separating centrosomes. Does not accumulate at the microtubule minus ends, but instead localizes to the centrosomes and centrosome-surrounding area in a microtubule-independent and dependent manner, respectively. .

Expression : Uterus,

Tag : orthogonal

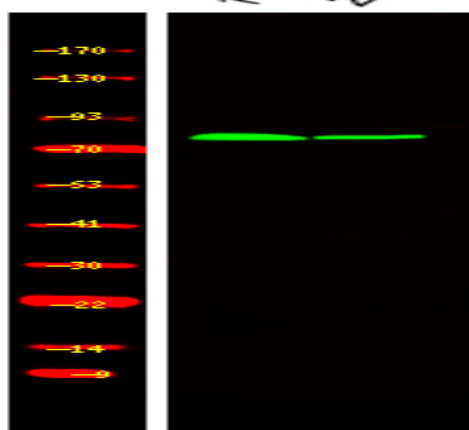
Sort : 25263

No4 : 1

Host : Rabbit

Modifications : Phospho

Products Images



Western Blot analysis of HeLa cell, 2, LPS 100ng/mL 30min treated ,using primary antibody at 1:1000 dilution. Secondary antibody(catalog#:RS23920) was diluted at 1:10000