

**NFκB-p65 (Acetyl Lys221) Polyclonal Antibody**

<b>Catalog No :</b>	YK0065
<b>Reactivity :</b>	Human;Mouse;Rat
<b>Applications :</b>	WB;ELISA
<b>Target :</b>	NFκB p65
<b>Fields :</b>	>>Antifolate resistance;>>MAPK signaling pathway;>>Ras signaling pathway;>>cAMP signaling pathway;>>Chemokine signaling pathway;>>NF-kappa B signaling pathway;>>HIF-1 signaling pathway;>>Sphingolipid signaling pathway;>>Mitophagy - animal;>>PI3K-Akt signaling pathway;>>Apoptosis;>>Longevity regulating pathway;>>Cellular senescence;>>Osteoclast differentiation;>>Neutrophil extracellular trap formation;>>Toll-like receptor signaling pathway;>>NOD-like receptor signaling pathway;>>RIG-I-like receptor signaling pathway;>>Cytosolic DNA-sensing pathway;>>C-type lectin receptor signaling pathway;>>IL-17 signaling pathway;>>Th1 and Th2 cell differentiation;>>Th17 cell differentiation;>>T cell receptor signaling pathway;>>B cell receptor signaling pathway;>>TNF signaling pathway;>>Neurotrophin signaling pathway;>>Prolactin signaling pathway;>>Adipocytokine signaling pathway;>>Relaxin signaling pathway;>>Insulin resistance;>>Non-alcoholic fatty liver disease;>>AGE-RAGE signaling pathway in diabe
<b>Gene Name :</b>	RELA
<b>Protein Name :</b>	Transcription factor p65
<b>Human Gene Id :</b>	5970
<b>Human Swiss Prot No :</b>	Q04206
<b>Mouse Gene Id :</b>	19697
<b>Mouse Swiss Prot No :</b>	Q04207
<b>Immunogen :</b>	Synthesized acetyl-peptide derived from the Internal region of human NFκB-p65 around the acetylation site of K221.
<b>Specificity :</b>	Acetyl-NFκB-p65 (K221) Polyclonal Antibody detects endogenous levels of

NFκB-p65 protein only when acetylation at K221.

---

**Formulation :** Liquid in PBS containing 50% glycerol, 0.5% BSA and 0.02% sodium azide.

---

**Source :** Polyclonal, Rabbit,IgG

---

**Dilution :** WB 1:500 - 1:2000. ELISA: 1:10000. Not yet tested in other applications.

---

**Purification :** The antibody was affinity-purified from rabbit antiserum by affinity-chromatography using epitope-specific immunogen.

---

**Concentration :** 1 mg/ml

---

**Storage Stability :** -15°C to -25°C/1 year(Do not lower than -25°C)

---

**Observed Band :** 65kD

---

**Cell Pathway :** MAPK\_ERK\_Growth;MAPK\_G\_Protein;Chemokine;Apoptosis\_Inhibition;Apoptosis\_Mitochondrial;Apoptosis\_Overview;Toll\_Like;NOD-like receptor;RIG-I-like receptor;Cytosolic DNA-sensing pathway;T\_Cell\_Receptor;B

---

**Background :** NF-kappa-B is a ubiquitous transcription factor involved in several biological processes. It is held in the cytoplasm in an inactive state by specific inhibitors. Upon degradation of the inhibitor, NF-kappa-B moves to the nucleus and activates transcription of specific genes. NF-kappa-B is composed of NFKB1 or NFKB2 bound to either REL, RELA, or RELB. The most abundant form of NF-kappa-B is NFKB1 complexed with the product of this gene, RELA. Four transcript variants encoding different isoforms have been found for this gene. [provided by RefSeq, Sep 2011],

---

**Function :** function:NF-kappa-B is a pleiotropic transcription factor which is present in almost all cell types and is involved in many biological processes such as inflammation, immunity, differentiation, cell growth, tumorigenesis and apoptosis. NF-kappa-B is a homo- or heterodimeric complex formed by the Rel-like domain-containing proteins RELA/p65, RELB, NFKB1/p105, NFKB1/p50, REL and NFKB2/p52 and the heterodimeric p65-p50 complex appears to be most abundant one. The dimers bind at kappa-B sites in the DNA of their target genes and the individual dimers have distinct preferences for different kappa-B sites that they can bind with distinguishable affinity and specificity. Different dimer combinations act as transcriptional activators or repressors, respectively. NF-kappa-B is controlled by various mechanisms of post-translational modification and subcellular compartmentalization as well as by in

---

**Subcellular Location :** Nucleus . Cytoplasm . Nuclear, but also found in the cytoplasm in an inactive form complexed to an inhibitor (I-kappa-B) (PubMed:1493333). Colocalized with DDX1 in the nucleus upon TNF-alpha induction (PubMed:19058135). Colocalizes

---

with GFI1 in the nucleus after LPS stimulation (PubMed:20547752).  
Translocation to the nucleus is impaired in L.monocytogenes infection  
(PubMed:20855622).

**Expression :** Bone,Colon,Pancreas,Placenta,

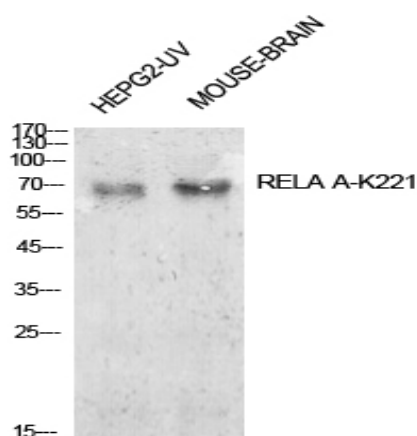
**Sort :** 10808

**No4 :** 1

**Host :** Rabbit

**Modifications :** Acetyl

## Products Images



Western Blot analysis of HepG2-UV, mouse brain cells using Acetyl-NFκB-p65 (K221) Polyclonal Antibody. Antibody was diluted at 1:1000. Secondary antibody(catalog#:RS0002) was diluted at 1:20000