

MAZ (Phospho Thr72) rabbit pAb

Catalog No :	YP1770
Reactivity :	Human;Mouse;Rat
Applications :	WB
Target :	MAZ
Gene Name :	MAZ ZNF801
Protein Name :	MAZ (Phospho-Thr72)
Human Gene Id :	4150
Human Swiss Prot No :	P56270
Mouse Swiss Prot No :	P56671
Immunogen :	Synthesized peptide derived from human MAZ (Phospho-Thr72)
Specificity :	This antibody detects endogenous levels of MAZ (Phospho-Thr72) at Human, Mouse,Rat
Formulation :	Liquid in PBS containing 50% glycerol, 0.5% BSA and 0.02% sodium azide.
Source :	Polyclonal, Rabbit,IgG
Dilution :	WB 1:500-2000
Purification :	The antibody was affinity-purified from rabbit serum by affinity-chromatography using specific immunogen.
Concentration :	1 mg/ml
Storage Stability :	-15°C to -25°C/1 year(Do not lower than -25°C)
Molecularweight :	52kD

Function : function:May function as a transcription factor with dual roles in transcription initiation and termination. Binds to two sites, ME1a1 and ME1a2, within the c-myc promoter having greater affinity for the former. Also binds to multiple G/C-rich sites within the promoter of the Sp1 family of transcription factors.,similarity:Contains 6 C2H2-type zinc fingers.,subcellular location:In brains of Alzheimer disease patients, present in a plaque-like structures.,subunit:Interacts with BPTF.,tissue specificity:Present in kidney, liver and brain. In the brain, highest levels are found in motor cortex and midfrontal cortex (at protein level).,

Subcellular Location : Nucleus . In brains of Alzheimer disease patients, present in a plaque-like structures.

Expression : Present in kidney, liver and brain. In the brain, highest levels are found in motor cortex and midfrontal cortex (at protein level). ; [Isoform 1]: Expressed in the heart, brain, placenta, lung, liver, skeletal muscle and weakly expressed in the kidney (PubMed:1502157). Expressed in the joint synovium (PubMed:19583771).

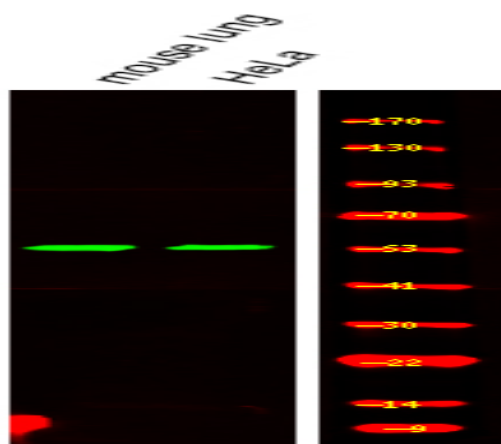
Sort : 25249

No4 : 1

Host : Rabbit

Modifications : Phospho

Products Images



Western Blot analysis of various,using primary antibody at 1:1000 dilution. Secondary antibody(catalog#:RS23920) was diluted at 1:10000