

Claspin (Phospho Ser30) rabbit pAb

Catalog No :	YP1768
Reactivity :	Human;Mouse;Rat
Applications :	WB
Target :	Claspin
Gene Name :	CLSPN
Protein Name :	Claspin (Phospho-Ser30)
Human Gene Id :	63967
Human Swiss Prot No :	Q9HAW4
Mouse Gene Id :	269582
Mouse Swiss Prot No :	Q80YR7
Immunogen :	Synthesized peptide derived from human Claspin (Phospho-Ser30)
Specificity :	This antibody detects endogenous levels of Claspin (Phospho-Ser30) at Human, Mouse,Rat
Formulation :	Liquid in PBS containing 50% glycerol, 0.5% BSA and 0.02% sodium azide.
Source :	Polyclonal, Rabbit,IgG
Dilution :	WB 1:500-2000
Purification :	The antibody was affinity-purified from rabbit serum by affinity-chromatography using specific immunogen.
Concentration :	1 mg/ml
Storage Stability :	-15 °C to -25 °C/1 year(Do not lower than -25 °C)

Molecularweight : 147kD

Background : The product of this gene is an essential upstream regulator of checkpoint kinase 1 and triggers a checkpoint arrest of the cell cycle in response to replicative stress or DNA damage. The protein is also required for efficient DNA replication during a normal S phase. Multiple transcript variants encoding different isoforms have been found for this gene. [provided by RefSeq, Jun 2010],

Function : domain:The C-terminus of the protein contains 3 potential CHEK1-binding motifs (CKB motifs). Potential phosphorylation sites within CKB motif 1 and CKB motif 2 are required for interaction with CHEK1.,function:Required for checkpoint mediated cell cycle arrest in response to inhibition of DNA replication or to DNA damage induced by both ionizing and UV irradiation. Adapter protein which binds to BRCA1 and the checkpoint kinase CHEK1 and facilitates the ATR-dependent phosphorylation of both proteins. Can also bind specifically to branched DNA structures and may associate with S-phase chromatin following formation of the pre-replication complex (pre-RC). This may indicate a role for this protein as a sensor which monitors the integrity of DNA replication forks.,induction:Expression peaks at S/G2 phases of the cell cycle.,PTM:Phosphorylated during activation of DNA replication or DNA damage

Subcellular Location : Nucleus .

Expression : Bone marrow,Epithelium,PCR rescued clones,Skin,

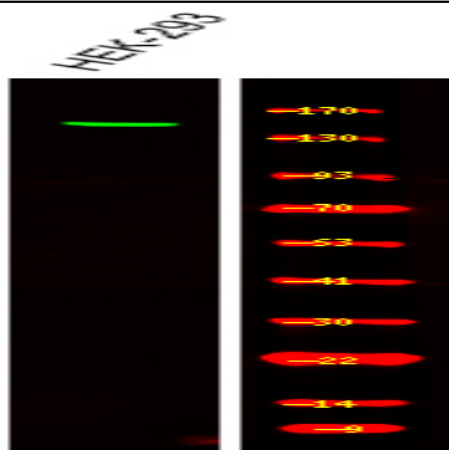
Sort : 25247

No4 : 1

Host : Rabbit

Modifications : Phospho

Products Images



Western Blot analysis of various, using primary antibody at 1:1000 dilution. Secondary antibody (catalog#:RS23920) was diluted at 1:10000