

**CRMP-1 (Phospho Tyr504) rabbit pAb**

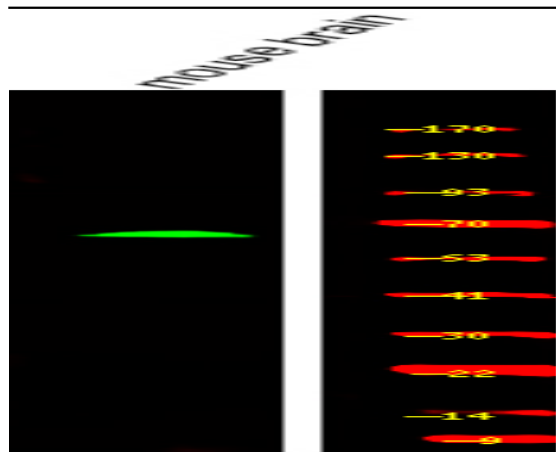
|                              |   |
|------------------------------|---|
| <b>Catalog No :</b>          | YP1756  |
| <b>Reactivity :</b>          | Human;Mouse;Rat   |
| <b>Applications :</b>        | WB  |
| <b>Target :</b>              | CRMP-1  |
| <b>Gene Name :</b>           | CRMP1 DPYSL1 ULIP3  |
| <b>Protein Name :</b>        | CRMP-1 (Phospho-Tyr504)   |
| <b>Human Gene Id :</b>       | 1400  |
| <b>Human Swiss Prot No :</b> | Q14194  |
| <b>Mouse Gene Id :</b>       | 12933   |
| <b>Mouse Swiss Prot No :</b> | P97427  |
| <b>Rat Gene Id :</b>         | 25415   |
| <b>Rat Swiss Prot No :</b>   | Q62950  |
| <b>Immunogen :</b>           | Synthesized peptide derived from human CRMP-1 (Phospho-Tyr504)  |
| <b>Specificity :</b>         | This antibody detects endogenous levels of CRMP-1 (Phospho-Tyr504) at Human, Mouse,Rat                    |
| <b>Formulation :</b>         | Liquid in PBS containing 50% glycerol, 0.5% BSA and 0.02% sodium azide.                                   |
| <b>Source :</b>              | Polyclonal, Rabbit,IgG  |
| <b>Dilution :</b>            | WB 1:500-2000   |
| <b>Purification :</b>        | The antibody was affinity-purified from rabbit serum by affinity-chromatography using specific immunogen. |

---

|                               |   |
|-------------------------------|---|
| <b>Concentration :</b>        | 1 mg/ml   |
| <b>Storage Stability :</b>    | -15°C to -25°C/1 year(Do not lower than -25°C)  |
| <b>Molecularweight :</b>      | 63kD  |
| <b>Background :</b>           | This gene encodes a member of a family of cytosolic phosphoproteins expressed exclusively in the nervous system. The encoded protein is thought to be a part of the semaphorin signal transduction pathway implicated in semaphorin-induced growth cone collapse during neural development. Alternative splicing results in multiple transcript variants. [provided by RefSeq, Jul 2008],   |
| <b>Function :</b>             | function:Necessary for signaling by class 3 semaphorins and subsequent remodeling of the cytoskeleton. Plays a role in axon guidance, invasive growth and cell migration.,similarity:Belongs to the DHOase family. Hydantoinase/dihydropyrimidinase subfamily.,subcellular location:Associated with centrosomes and the mitotic spindle during metaphase.,subunit:Homotetramer, and heterotetramer with DPYSL2, DPYSL3, DPYSL4 or DPYSL5. Interacts with PLXNA1.,tissue specificity:Brain., |
| <b>Subcellular Location :</b> | Cytoplasm . Cytoplasm, cytoskeleton, microtubule organizing center, centrosome . Cytoplasm, cytoskeleton, spindle . Cell projection, growth cone . Cytoplasm, cytoskeleton . Perikaryon . Associated with centrosomes and the mitotic spindle during metaphase (PubMed:11562390). Colocalizes with FLNA and tubulin in the central region of DRG neuron growth cone (By similarity). Following SEMA3A stimulation of DRG neurons, colocalizes with F-actin (By similarity). .               |
| <b>Expression :</b>           | Brain.  |
| <b>Sort :</b>                 | 25235   |
| <b>No4 :</b>                  | 1   |
| <b>Host :</b>                 | Rabbit  |
| <b>Modifications :</b>        | Phospho   |

---

## Products Images



Western Blot analysis of various, using primary antibody at 1:1000 dilution. Secondary antibody (catalog#:RS23920) was diluted at 1:10000