

## TRF2 (Phospho Ser365) rabbit pAb

<b>Catalog No :</b>	YP1753
<b>Reactivity :</b>	Human;Mouse;Rat
<b>Applications :</b>	WB
<b>Target :</b>	TRF2
<b>Gene Name :</b>	TERF2 TRBF2 TRF2
<b>Protein Name :</b>	TRF2 (Phospho-Ser365)
<b>Human Gene Id :</b>	7014
<b>Human Swiss Prot No :</b>	Q15554
<b>Mouse Gene Id :</b>	21750
<b>Mouse Swiss Prot No :</b>	O35144
<b>Immunogen :</b>	Synthesized peptide derived from human TRF2 (Phospho-Ser365)
<b>Specificity :</b>	This antibody detects endogenous levels of TRF2 (Phospho-Ser365) at Human, Mouse,Rat
<b>Formulation :</b>	Liquid in PBS containing 50% glycerol, 0.5% BSA and 0.02% sodium azide.
<b>Source :</b>	Polyclonal, Rabbit,IgG
<b>Dilution :</b>	WB 1:500-2000
<b>Purification :</b>	The antibody was affinity-purified from rabbit serum by affinity-chromatography using specific immunogen.
<b>Concentration :</b>	1 mg/ml
<b>Storage Stability :</b>	-15°C to -25°C/1 year(Do not lower than -25°C)

**Molecularweight :** 55kD

---

**Background :** This gene encodes a telomere specific protein, TERF2, which is a component of the telomere nucleoprotein complex. This protein is present at telomeres in metaphase of the cell cycle, is a second negative regulator of telomere length and plays a key role in the protective activity of telomeres. While having similar telomere binding activity and domain organization, TERF2 differs from TERF1 in that its N terminus is basic rather than acidic. [provided by RefSeq, Jul 2008],

---

**Function :** function: Binds the telomeric double-stranded TTAGGG repeat. Protects against end-to-end fusion of chromosomes and plays a role in successful progression through the cell division cycle. Component of the shelterin complex (telosome) that is involved in the regulation of telomere length and protection. Shelterin associates with arrays of double-stranded TTAGGG repeats added by telomerase and protects chromosome ends; without its protective activity, telomeres are no longer hidden from the DNA damage surveillance and chromosome ends are inappropriately processed by DNA repair pathways.,PTM: Phosphorylated upon DNA damage, probably by ATM or ATR.,similarity: Contains 1 HTH myb-type DNA-binding domain.,subcellular location: Colocalizes with telomeric DNA in interphase cells and is located at chromosome ends during metaphase.,subunit: Homodimer. Component of the shelterin complex (telosome) compos

---

**Subcellular Location :** Nucleus . Chromosome, telomere . Colocalizes with telomeric DNA in interphase cells and is located at chromosome ends during metaphase.

---

**Expression :** Ubiquitous. Highly expressed in spleen, thymus, prostate, uterus, testis, small intestine, colon and peripheral blood leukocytes.

---

**Sort :** 25232

---

**No4 :** 1

---

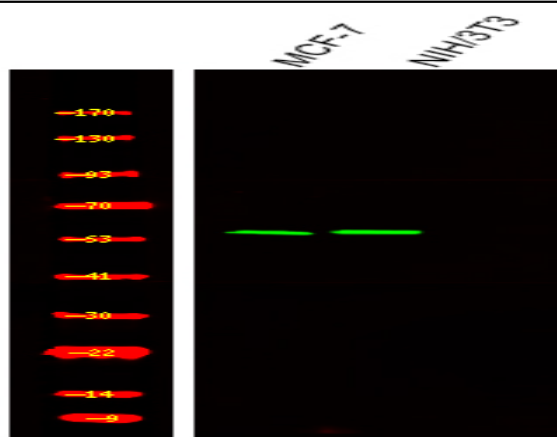
**Host :** Rabbit

---

**Modifications :** Phospho

---

## Products Images



Western Blot analysis of various, using primary antibody at 1:1000 dilution. Secondary antibody(catalog#:RS23920) was diluted at 1:10000