

XRCC4 (Phospho Ser260) rabbit pAb

Catalog No :	YP1724
Reactivity :	Human;Mouse;Rat
Applications :	WB
Target :	XRCC4
Fields :	>>Non-homologous end-joining
Gene Name :	XRCC4
Protein Name :	XRCC4 (Phospho-Ser260)
Human Gene Id :	7518
Human Swiss Prot No :	Q13426
Mouse Gene Id :	108138
Mouse Swiss Prot No :	Q924T3
Immunogen :	Synthesized peptide derived from human XRCC4 (Phospho-Ser260)
Specificity :	This antibody detects endogenous levels of XRCC4 (Phospho-Ser260) at Human, Mouse,Rat
Formulation :	Liquid in PBS containing 50% glycerol, 0.5% BSA and 0.02% sodium azide.
Source :	Polyclonal, Rabbit,IgG
Dilution :	WB 1:500-2000
Purification :	The antibody was affinity-purified from rabbit serum by affinity-chromatography using specific immunogen.
Concentration :	1 mg/ml

Storage Stability : -15°C to -25°C/1 year(Do not lower than -25°C)

Observed Band : 35kD

Background : The protein encoded by this gene functions together with DNA ligase IV and the DNA-dependent protein kinase in the repair of DNA double-strand breaks. This protein plays a role in both non-homologous end joining and the completion of V(D)J recombination. Mutations in this gene can cause short stature, microcephaly, and endocrine dysfunction (SSMED). Alternative splicing generates several transcript variants. [provided by RefSeq, Dec 2015],

Function : function:Involved in DNA non-homologous end joining (NHEJ) required for double-strand break repair and V(D)J recombination. Binds to DNA and to DNA ligase IV (LIG4). The LIG4-XRCC4 complex is responsible for the NHEJ ligation step, and XRCC4 enhances the joining activity of LIG4. Binding of the LIG4-XRCC4 complex to DNA ends is dependent on the assembly of the DNA-dependent protein kinase complex DNA-PK to these DNA ends.,PTM:Monoubiquitinated.,PTM:Phosphorylated by PRKDC. The phosphorylation seems not to be necessary for binding to DNA. Phosphorylation by CK2 promotes interaction with APTX.,PTM:Sumoylation at Lys-210 is required for nuclear localization and recombination efficiency. Has no effect on ubiquitination.,similarity:Belongs to the XRCC4 family.,subunit:Homodimer and homotetramer in solution. The homodimer associates with LIG4, and the LIG4-XRCC4 complex associates in a DNA-dep

Subcellular Location : Nucleus . Chromosome . Localizes to site of double-strand breaks. .; [Protein XRCC4, C-terminus]: Cytoplasm . Translocates from the nucleus to the cytoplasm following cleavage by caspase-3 (CASP3). .

Expression : Widely expressed.

Tag : orthogonal

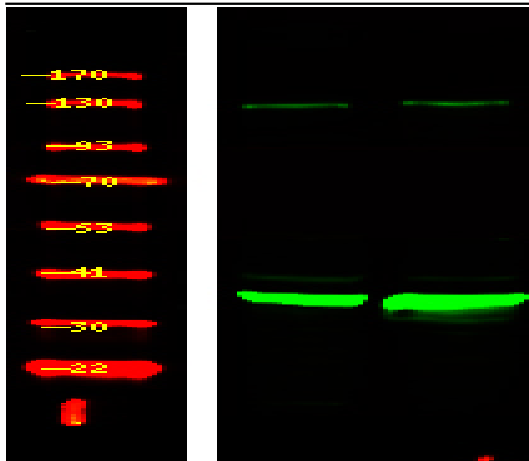
Sort : 25203

No4 : 1

Host : Rabbit

Modifications : Phospho

Products Images



Western Blot analysis of 1 A549 cell 2 LPS 100ng/mL 30min treated ,using primary antibody at 1:1000 dilution. Secondary antibody(catalog#:RS23920) was diluted at 1:10000