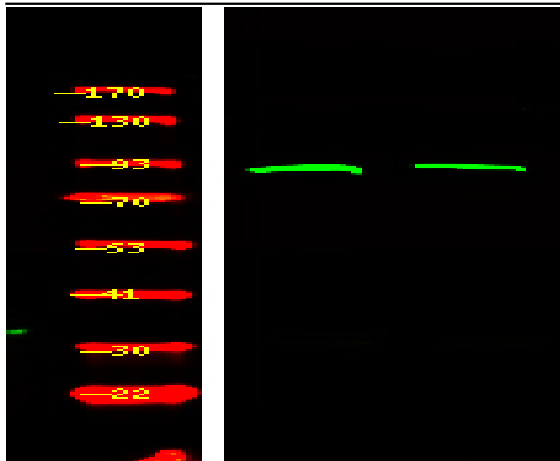


QIK/QSK (Phospho Thr175/163) rabbit pAb

Catalog No :	YP1716
Reactivity :	Human;Mouse;Rat
Applications :	WB
Target :	QIK/QSK
Fields :	>>Glucagon signaling pathway
Gene Name :	SIK1 SIK SNF1LK
Protein Name :	QIK/QSK (Phospho-Thr175/163)
Human Gene Id :	150094
Human Swiss Prot No :	P57059
Mouse Gene Id :	17691
Mouse Swiss Prot No :	Q60670
Rat Gene Id :	59329
Rat Swiss Prot No :	Q9R1U5
Immunogen :	Synthesized peptide derived from human QIK/QSK (Phospho-Thr175/163)
Specificity :	This antibody detects endogenous levels of QIK/QSK (Phospho-Thr175/163) at Human, Mouse,Rat
Formulation :	Liquid in PBS containing 50% glycerol, 0.5% BSA and 0.02% sodium azide.
Source :	Polyclonal, Rabbit,IgG
Dilution :	WB 1:500-2000

Purification :	The antibody was affinity-purified from rabbit serum by affinity-chromatography using specific immunogen.
Concentration :	1 mg/ml
Storage Stability :	-15°C to -25°C/1 year(Do not lower than -25°C)
Molecularweight :	86kD
Function :	<p>catalytic activity:ATP + a protein = ADP + a phosphoprotein.,cofactor:Magnesium.,enzyme regulation:Activated by phosphorylation on Thr-182 by STK11 in complex with STE20-related adapter-alpha (STRAD alpha) pseudo kinase and CAB39.,function:Transient role during the earliest stages of myocardial cell differentiation and/or primitive chamber formation and may also be important for the earliest stages of skeletal muscle growth and/or differentiation. Potential role in G2/M cell cycle regulation. Inhibits CREB activity by phosphorylating and repressing the CREB-specific coactivators, CRTC1-3.,PTM:Phosphorylated upon DNA damage, probably by ATM or ATR.,similarity:Belongs to the protein kinase superfamily. CAMK Ser/Thr protein kinase family. AMPK subfamily.,similarity:Contains 1 protein kinase domain.,similarity:Contains 1 UBA domain.,subcellular location:Translocates to the cytoplasm on phosp</p>
Subcellular Location :	Cytoplasm . Nucleus . Locates to cytoplasm when inactive following cAMP-induced phosphorylation, probably by PKA (PubMed:29211348).
Expression :	Fetal lung,Spleen,Testis,
Tag :	orthogonal
Sort :	25195
No4 :	1
Host :	Rabbit
Modifications :	Phospho

Products Images



Western Blot analysis of 1 HeLa cell, 2 LPS 100ng/mL 30min treated ,using primary antibody at 1:1000 dilution. Secondary antibody(catalog#:RS23920) was diluted at 1:10000