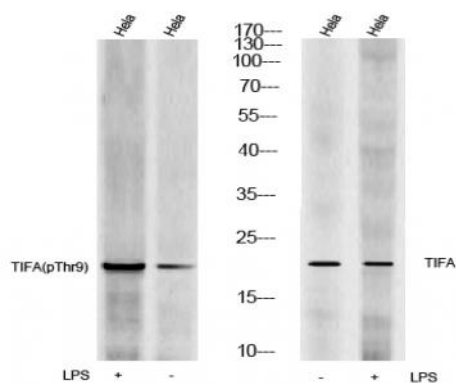


## TIFA(Phospho Thr9) rabbit pAb

<b>Catalog No :</b>	YP1711
<b>Reactivity :</b>	Human;Mouse;Rat
<b>Applications :</b>	WB
<b>Target :</b>	TIFA
<b>Fields :</b>	>>Shigellosis
<b>Gene Name :</b>	TIFA T2BP
<b>Protein Name :</b>	TIFA(Phospho-Thr9)
<b>Human Gene Id :</b>	92610
<b>Human Swiss Prot No :</b>	Q96CG3
<b>Mouse Gene Id :</b>	211550
<b>Mouse Swiss Prot No :</b>	Q793I8
<b>Rat Gene Id :</b>	310877
<b>Rat Swiss Prot No :</b>	Q5XIB9
<b>Immunogen :</b>	Synthesized peptide derived from human TIFA(Phospho-Thr9)
<b>Specificity :</b>	This antibody detects endogenous levels of TIFA(Phospho-Thr9) at Human, Mouse,Rat
<b>Formulation :</b>	Liquid in PBS containing 50% glycerol, 0.5% BSA and 0.02% sodium azide.
<b>Source :</b>	Polyclonal, Rabbit,IgG
<b>Dilution :</b>	WB 1:500-2000

<b>Purification :</b>	The antibody was affinity-purified from rabbit serum by affinity-chromatography using specific immunogen.
<b>Concentration :</b>	1 mg/ml
<b>Storage Stability :</b>	-15°C to -25°C/1 year(Do not lower than -25°C)
<b>Molecularweight :</b>	20kD
<b>Subcellular Location :</b>	Cytoplasm . Colocalizes with lysosomal marker LAMP2 following homooligomerization and subsequent activation. .
<b>Tag :</b>	orthogonal
<b>Sort :</b>	25191
<b>No4 :</b>	1
<b>Host :</b>	Rabbit
<b>Modifications :</b>	Phospho

## Products Images



Western Blot analysis of cell lysis treated or untreated by LPS 100ng/mL 30min, using primary antibody at 1:1000 dilution. Secondary antibody(catalog#:RS23920) was diluted at 1:10000