

**QIK/QSK (Phospho Thr175/163) rabbit pAb**

<b>Catalog No :</b>	YP1687
<b>Reactivity :</b>	Human;Mouse;Rat
<b>Applications :</b>	WB
<b>Target :</b>	QIK/QSK
<b>Fields :</b>	>>Glucagon signaling pathway
<b>Gene Name :</b>	SIK2 KIAA0781 QIK SNF1LK2
<b>Protein Name :</b>	QIK/QSK (Phospho-Thr175/163)
<b>Human Gene Id :</b>	23235
<b>Human Swiss Prot No :</b>	Q9H0K1
<b>Mouse Gene Id :</b>	235344
<b>Mouse Swiss Prot No :</b>	Q8CFH6
<b>Immunogen :</b>	Synthesized peptide derived from human QIK/QSK (Phospho-Thr175/163)
<b>Specificity :</b>	This antibody detects endogenous levels of QIK/QSK (Phospho-Thr175/163) at Human, Mouse,Rat
<b>Formulation :</b>	Liquid in PBS containing 50% glycerol, 0.5% BSA and 0.02% sodium azide.
<b>Source :</b>	Polyclonal, Rabbit,IgG
<b>Dilution :</b>	WB 1:500-2000
<b>Purification :</b>	The antibody was affinity-purified from rabbit serum by affinity-chromatography using specific immunogen.
<b>Concentration :</b>	1 mg/ml

**Storage Stability :** -15°C to -25°C/1 year(Do not lower than -25°C)

**Observed Band :** 105kD

**Function :** catalytic activity:ATP + a protein = ADP + a phosphoprotein.,cofactor:Magnesium.,enzyme regulation:Activated by phosphorylation on Thr-175 by STK11 in complex with STE20-related adapter-alpha (STRAD alpha) pseudo kinase and CAB39.,function:Phosphorylates 'Ser-794' of IRS1 in insulin-stimulated adipocytes, potentially modulating the efficiency of insulin signal transduction. Inhibits CREB activity by phosphorylating and repressing TORCs, the CREB-specific coactivators.,similarity:Belongs to the protein kinase superfamily. CAMK Ser/Thr protein kinase family. AMPK subfamily.,similarity:Contains 1 protein kinase domain.,similarity:Contains 1 UBA domain.,subunit:Interacts with and phosphorylates TORC2/CRTC2.,

**Subcellular Location :** Cytoplasm . Endoplasmic reticulum membrane .

**Expression :** Brain,Colon,Lung,Testis,

**Tag :** orthogonal

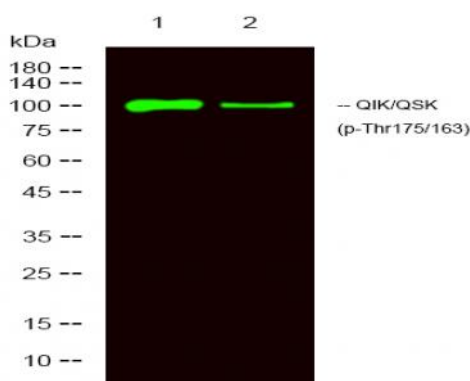
**Sort :** 25168

**No4 :** 1

**Host :** Rabbit

**Modifications :** Phospho

## Products Images



Western Blot analysis of 1 HeLa, 2 treated with LPS 100ng/mL 20min,using primary antibody at 1:1000 dilution. Secondary antibody(catalog#:RS23920) was diluted at 1:10000