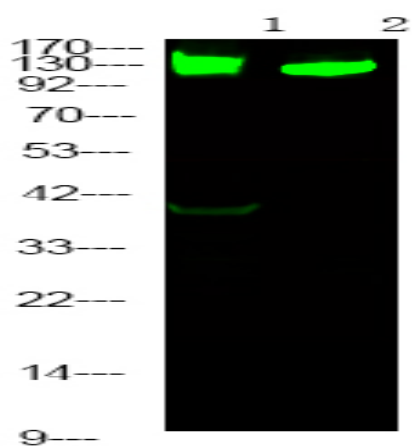


**RBL2 (Phospho Ser639) Rabbit pAb**

<b>Catalog No :</b>	YP1855
<b>Reactivity :</b>	Human;Mouse;Rat
<b>Applications :</b>	IHC;WB
<b>Target :</b>	p130
<b>Fields :</b>	>>FoxO signaling pathway;>>Cell cycle;>>PI3K-Akt signaling pathway;>>Cellular senescence;>>Human papillomavirus infection;>>Viral carcinogenesis
<b>Gene Name :</b>	RBL2 RB2
<b>Protein Name :</b>	Retinoblastoma-like protein 2 (130 kDa retinoblastoma-associated protein) (p130) (Retinoblastoma-related protein 2) (RBR-2) (pRb2)
<b>Sequence :</b>	Q08999
<b>Human Gene Id :</b>	5934
<b>Human Swiss Prot No :</b>	Q08999
<b>Mouse Gene Id :</b>	19651
<b>Mouse Swiss Prot No :</b>	Q64700
<b>Rat Gene Id :</b>	81758
<b>Rat Swiss Prot No :</b>	O55081
<b>Immunogen :</b>	Synthesized peptide derived from human RBL2 (Phospho Ser639)
<b>Specificity :</b>	This antibody detects endogenous levels of RBL2 (Phospho Ser639) Rabbit pAb at Human, Mouse,Rat
<b>Formulation :</b>	Liquid in PBS containing 50% glycerol, and 0.02% sodium azide.

<b>Source :</b>	Rabbit,polyclonal
<b>Dilution :</b>	WB 1:500-2000 IHC 1:50-200
<b>Purification :</b>	The antibody was affinity-purified from rabbit serum by affinity-chromatography using specific immunogen.
<b>Concentration :</b>	1 mg/ml
<b>Storage Stability :</b>	-15°C to -25°C/1 year(Do not lower than -25°C)
<b>Molecularweight :</b>	125kD
<b>Function :</b>	function:Key regulator of entry into cell division. Directly involved in heterochromatin formation by maintaining overall chromatin structure and, in particular, that of constitutive heterochromatin by stabilizing histone methylation. Recruits and targets histone methyltransferases SUV420H1 and SUV420H2, leading to epigenetic transcriptional repression. Controls histone H4 'Lys-20' trimethylation. Probably acts as a transcription repressor by recruiting chromatin-modifying enzymes to promoters. Potent inhibitor of E2F-mediated trans-activation, associates preferentially with E2F5. Binds to cyclins A and E. Binds to and may be involved in the transforming capacity of the adenovirus E1A protein. May act as a tumor suppressor.,miscellaneous:G0-restricted expression.,PTM:During G0 and early G1 phase of the cell cycle, phosphorylated on Ser-639 and on 5 sites within the domain B. Phosphorylat
<b>Subcellular Location :</b>	Nucleus.
<b>Tag :</b>	orthogonal
<b>Sort :</b>	999
<b>No4 :</b>	1
<b>Host :</b>	Rabbit
<b>Modifications :</b>	Phospho

## Products Images



Western Blot analysis of 1 HeLa cell, 2 Serum-free treated ,using primary antibody at 1:1000 dilution. Secondary antibody(catalog#:RS23920) was diluted at 1:10000