

## EPHA1 (Phospho Tyr781) Rabbit pAb

<b>Catalog No :</b>	YP1835
<b>Reactivity :</b>	Human;Mouse
<b>Applications :</b>	IHC;WB
<b>Target :</b>	EPHA1
<b>Fields :</b>	>>Axon guidance
<b>Gene Name :</b>	EPHA1 EPH EPHT EPHT1
<b>Protein Name :</b>	Ephrin type-A receptor 1 (hEpha1) (EC 2.7.10.1) (EPH tyrosine kinase) (EPH tyrosine kinase 1) (Erythropoietin-producing hepatoma receptor) (Tyrosine-protein kinase receptor EPH)
<b>Sequence :</b>	P21709
<b>Human Gene Id :</b>	2041
<b>Human Swiss Prot No :</b>	P21709
<b>Mouse Gene Id :</b>	13835
<b>Mouse Swiss Prot No :</b>	Q60750
<b>Immunogen :</b>	Synthesized peptide derived from human EPHA1 (Phospho Tyr781)
<b>Specificity :</b>	This antibody detects endogenous levels of EPHA1 (Phospho Tyr781) Rabbit pAb at Human, Mouse
<b>Formulation :</b>	Liquid in PBS containing 50% glycerol, and 0.02% sodium azide.
<b>Source :</b>	Rabbit,polyclonal
<b>Dilution :</b>	WB 1:500-2000 IHC 1:50-200
<b>Purification :</b>	The antibody was affinity-purified from rabbit serum by affinity-chromatography

using specific immunogen.

---

**Concentration :** 1 mg/ml

---

**Storage Stability :** -15°C to -25°C/1 year(Do not lower than -25°C)

---

**Observed Band :** 69kD

---

**Background :** EPH receptor A1(EPHA1) Homo sapiens This gene belongs to the ephrin receptor subfamily of the protein-tyrosine kinase family. EPH and EPH-related receptors have been implicated in mediating developmental events, particularly in the nervous system. Receptors in the EPH subfamily typically have a single kinase domain and an extracellular region containing a Cys-rich domain and 2 fibronectin type III repeats. The ephrin receptors are divided into 2 groups based on the similarity of their extracellular domain sequences and their affinities for binding ephrin-A and ephrin-B ligands. This gene is expressed in some human cancer cell lines and has been implicated in carcinogenesis. [provided by RefSeq, Jul 2008],

---

**Function :** catalytic activity:ATP + a [protein]-L-tyrosine = ADP + a [protein]-L-tyrosine phosphate.,function:Receptor for members of the ephrin-A family. Binds with a low affinity to ephrin-A1.,similarity:Belongs to the protein kinase superfamily. Tyr protein kinase family.,similarity:Belongs to the protein kinase superfamily. Tyr protein kinase family. Ephrin receptor subfamily.,similarity:Contains 1 protein kinase domain.,similarity:Contains 1 SAM (sterile alpha motif) domain.,similarity:Contains 2 fibronectin type-III domains.,tissue specificity:Overexpressed in several carcinomas.,

---

**Subcellular Location :** Cell membrane ; Single-pass type I membrane protein .

---

**Expression :** Overexpressed in several carcinomas.

---

**Tag :** orthogonal

---

**Sort :** 999

---

**No4 :** 1

---

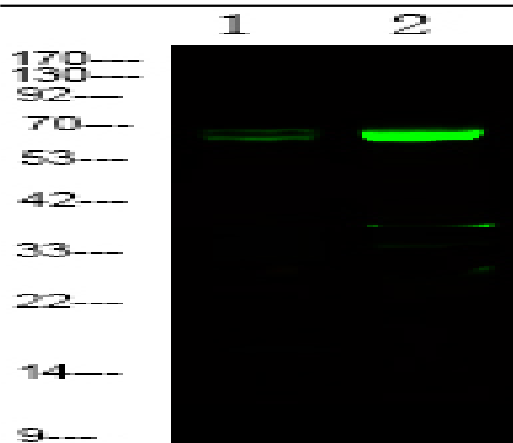
**Host :** Rabbit

---

**Modifications :** Phospho

---

**Products Images**



Western Blot analysis of 1 Jurkat cell 2 Serum-free treated ,using primary antibody at 1:1000 dilution. Secondary antibody(catalog#:RS23920) was diluted at 1:10000