

PEPC (Phospho Ser15) Polyclonal Antibody

Catalog No :	YP1636
Reactivity :	A. comosus, A. thaliana, H. vulgare, J. curcas, M. crystallinum, N. tabacum, Z. mays, T. weissfloggi,
Applications :	WB;ELISA;IHC
Target :	phosphoenolpyruvate carboxylase
Gene Name :	PGC
Protein Name :	Phosphoenolpyruvate carboxylase
Immunogen :	Synthetic Peptide of PEPC (Phospho Ser15)
Specificity :	The antibody detects endogenous PEPC (Phospho Ser15) protein.
Formulation :	PBS, pH 7.4, containing 0.5%BSA, 0.02% sodium azide as Preservative and 50% Glycerol.
Source :	Polyclonal, Rabbit,IgG
Dilution :	WB 1:500-2000;IHC 1:50-300; ELISA 2000-20000
Purification :	The antibody was affinity-purified from rabbit antiserum by affinity-chromatography using epitope-specific immunogen.
Storage Stability :	-15°C to -25°C/1 year(Do not lower than -25°C)
Observed Band :	105-110kD
Background :	This gene encodes an aspartic proteinase that belongs to the peptidase family A1. The encoded protein is a digestive enzyme that is produced in the stomach and constitutes a major component of the gastric mucosa. This protein is also secreted into the serum. This protein is synthesized as an inactive zymogen that includes a highly basic prosegment. This enzyme is converted into its active mature form at low pH by sequential cleavage of the prosegment that is carried out by the enzyme itself. Polymorphisms in this gene are associated with susceptibility to gastric cancers. Serum levels of this enzyme are used as a

biomarker for certain gastric diseases including Helicobacter pylori related gastritis. Alternate splicing results in multiple transcript variants. A pseudogene of this gene is found on chromosome 1. [provided by RefSeq, Oct 2009],

Function : catalytic activity:More restricted specificity than pepsin A, but shows preferential cleavage at Tyr-|-Xaa bonds. High activity on hemoglobin.,function:Hydrolyzes a variety of proteins.,similarity:Belongs to the peptidase A1 family.,

Subcellular Location : Secreted.

Expression : Brain,Liver,Placenta,Stomach,

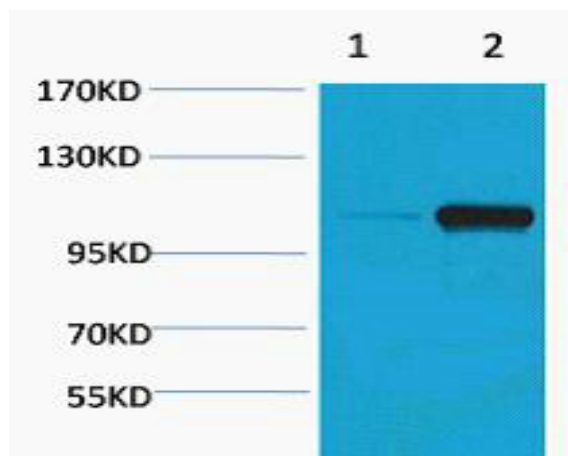
Sort : 11819

No4 : 1

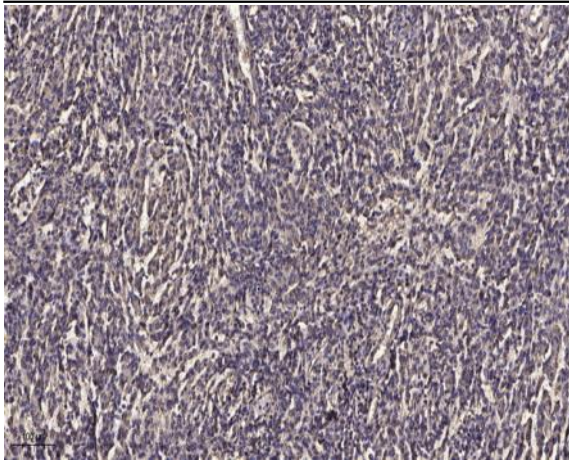
Host : Rabbit

Modifications : Phospho

Products Images



Western blot analysis of Maize 1) Dark, 2) Light, diluted at 1:2000. Secondary antibody(catalog#:RS0002) was diluted at 1:20000



Immunohistochemical analysis of paraffin-embedded human meningioma. 1, Antibody was diluted at 1:200(4 ° overnight). 2, Tris-EDTA,pH9.0 was used for antigen retrieval. 3,Secondary antibody was diluted at 1:200(room temperature, 45min).