

p56 Dok-2 (Phospho Tyr139) Rabbit pAb

Catalog No :	YP1817
Reactivity :	Human;Mouse
Applications :	IHC;WB
Target :	Dok-2
Gene Name :	DOK2
Protein Name :	Docking protein 2 (Downstream of tyrosine kinase 2) (p56(dok-2))
Sequence :	O60496
Human Gene Id :	9046
Human Swiss Prot No :	O60496
Mouse Gene Id :	13449
Mouse Swiss Prot No :	O70469
Immunogen :	Synthesized peptide derived from human p56 Dok-2 (Phospho Tyr139)
Specificity :	This antibody detects endogenous levels of p56 Dok-2 (Phospho Tyr139) Rabbit pAb at Human, Mouse
Formulation :	Liquid in PBS containing 50% glycerol, and 0.02% sodium azide.
Source :	Rabbit,polyclonal
Dilution :	WB 1:500-2000 IHC 1:50-200
Purification :	The antibody was affinity-purified from rabbit serum by affinity-chromatography using specific immunogen.
Concentration :	1 mg/ml

Storage Stability : -15°C to -25°C/1 year(Do not lower than -25°C)

Observed Band : 48kD

Background : docking protein 2(DOK2) Homo sapiens The protein encoded by this gene is constitutively tyrosine phosphorylated in hematopoietic progenitors isolated from chronic myelogenous leukemia (CML) patients in the chronic phase. It may be a critical substrate for p210(bcr/abl), a chimeric protein whose presence is associated with CML. This encoded protein binds p120 (RasGAP) from CML cells. [provided by RefSeq, Jul 2008],

Function : domain:PTB domain mediates receptor interaction.,function:DOK proteins are enzymatically inert adaptor or scaffolding proteins. They provide a docking platform for the assembly of multimolecular signaling complexes. DOK2 may modulate the cellular proliferation induced by IL-4, as well as IL-2 and IL-3. May be involved in modulating Bcr-Abl signaling. Attenuates EGF-stimulated MAP kinase activation.,PTM:On immunoreceptor stimulation, phosphorylated on C-terminal tyrosine residues. Phosphorylation on Tyr-345 is required for binding to the SH2 domain of NCK. Phosphorylation on both Tyr-271 and Tyr-299 is required for interaction with RASGAP.,similarity:Belongs to the DOK family. Type A subfamily.,similarity:Contains 1 IRS-type PTB domain.,similarity:Contains 1 PH domain.,subunit:Interacts with phosphorylated RASGAP and EGFR. Interacts with RET and NCK.,tissue specificity:Highly expressed in

Expression : Highly expressed in peripheral blood leukocytes, lymph nodes and spleen. Lower expression in thymus, bone marrow and fetal liver.

Tag : orthogonal

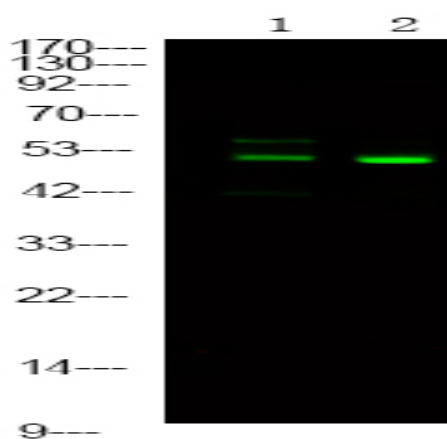
Sort : 999

No4 : 1

Host : Rabbit

Modifications : Phospho

Products Images



Western Blot analysis of 1 HeLa cell, 2 LPS 100ng/mL 30min treated ,using primary antibody at 1:1000 dilution. Secondary antibody(catalog#:RS23920) was diluted at 1:10000