

**DAPK1 (Phospho Ser289) Rabbit pAb**

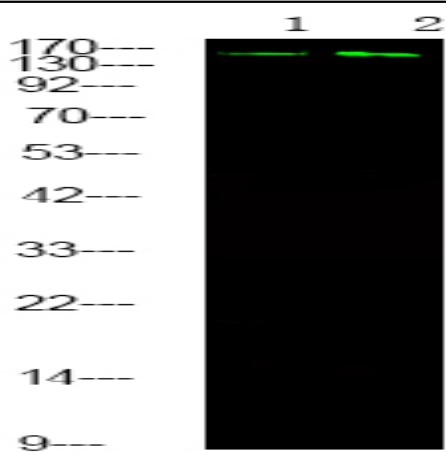
<b>Catalog No :</b>	YP1813
<b>Reactivity :</b>	Human;Mouse
<b>Applications :</b>	IHC;WB
<b>Target :</b>	DAPK1
<b>Fields :</b>	>>Autophagy - animal;>>Pathways in cancer;>>Bladder cancer
<b>Gene Name :</b>	DAPK1 DAPK
<b>Protein Name :</b>	Death-associated protein kinase 1 (DAP kinase 1) (EC 2.7.11.1)
<b>Sequence :</b>	P53355
<b>Human Gene Id :</b>	1612
<b>Human Swiss Prot No :</b>	P53355
<b>Mouse Gene Id :</b>	69635
<b>Mouse Swiss Prot No :</b>	Q80YE7
<b>Immunogen :</b>	Synthesized peptide derived from human DAPK1 (Phospho Ser289)
<b>Specificity :</b>	This antibody detects endogenous levels of DAPK1 (Phospho Ser289) Rabbit pAb at Human, Mouse
<b>Formulation :</b>	Liquid in PBS containing 50% glycerol, and 0.02% sodium azide.
<b>Source :</b>	Rabbit,polyclonal
<b>Dilution :</b>	WB 1:500-2000 IHC 1:50-200
<b>Purification :</b>	The antibody was affinity-purified from rabbit serum by affinity-chromatography using specific immunogen.

---

<b>Concentration :</b>	1 mg/ml
<b>Storage Stability :</b>	-15°C to -25°C/1 year(Do not lower than -25°C)
<b>Molecularweight :</b>	157kD
<b>Background :</b>	death associated protein kinase 1 (DAPK1) Homo sapiens Death-associated protein kinase 1 is a positive mediator of gamma-interferon induced programmed cell death. DAPK1 encodes a structurally unique 160-kD calmodulin dependent serine-threonine kinase that carries 8 ankyrin repeats and 2 putative P-loop consensus sites. It is a tumor suppressor candidate. Alternative splicing results in multiple transcript variants. [provided by RefSeq, Dec 2013],
<b>Function :</b>	catalytic activity:ATP + a protein = ADP + a phosphoprotein.,cofactor:Magnesium.,enzyme regulation:Negatively regulated by autophosphorylation on Ser-308.,function:Calcium/calmodulin-dependent serine/threonine kinase which acts as a positive regulator of apoptosis.,induction:Up-regulated following treatment with interferon-gamma.,similarity:Belongs to the protein kinase superfamily.,similarity:Belongs to the protein kinase superfamily. CAMK Ser/Thr protein kinase family. DAP kinase subfamily.,similarity:Contains 1 death domain.,similarity:Contains 1 protein kinase domain.,similarity:Contains 10 ANK repeats.,subcellular location:Colocalizes with the actin filament system.,
<b>Subcellular Location :</b>	[Isoform 1]: Cytoplasm. Cytoplasm, cytoskeleton. Colocalizes with MAP1B in the microtubules and cortical actin fibers.; [Isoform 2]: Cytoplasm. Cytoplasm, cytoskeleton.
<b>Expression :</b>	Isoform 2 is expressed in normal intestinal tissue as well as in colorectal carcinomas.
<b>Tag :</b>	orthogonal
<b>Sort :</b>	999
<b>No4 :</b>	1
<b>Host :</b>	Rabbit
<b>Modifications :</b>	Phospho

---

**Products Images**



Western Blot analysis of 1 HeLa cell, 2 LPS 100ng/mL 30min treated ,using primary antibody at 1:1000 dilution. Secondary antibody(catalog#:RS23920) was diluted at 1:10000