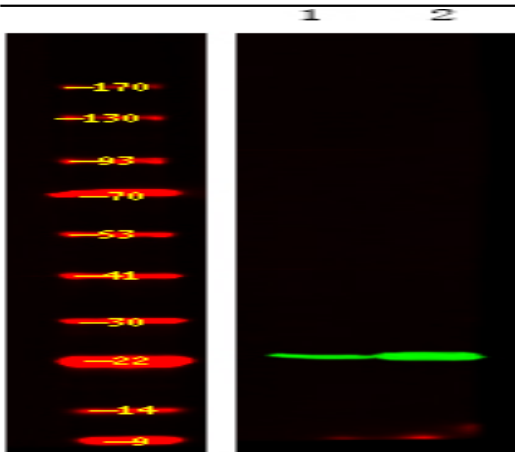


R-Ras (Phospho Tyr66) rabbit pAb

Catalog No :	YP1793
Reactivity :	Human;Mouse;Rat
Applications :	WB
Target :	R-Ras
Fields :	>>MAPK signaling pathway;>>Ras signaling pathway;>>Rap1 signaling pathway;>>cAMP signaling pathway;>>Phospholipase D signaling pathway;>>Mitophagy - animal;>>Autophagy - animal;>>Cellular senescence;>>Axon guidance;>>Apelin signaling pathway;>>C-type lectin receptor signaling pathway;>>Regulation of actin cytoskeleton;>>Salmonella infection;>>Proteoglycans in cancer
Gene Name :	RRAS
Protein Name :	R-Ras (Phospho-Tyr66)
Human Gene Id :	6237
Human Swiss Prot No :	P10301
Mouse Gene Id :	20130
Mouse Swiss Prot No :	P10833
Rat Gene Id :	361568
Rat Swiss Prot No :	D3Z8L7
Immunogen :	Synthesized peptide derived from human R-Ras (Phospho-Tyr66)
Specificity :	This antibody detects endogenous levels of R-Ras (Phospho-Tyr66) at Human, Mouse,Rat
Formulation :	Liquid in PBS containing 50% glycerol, 0.5% BSA and 0.02% sodium azide.

Source :	Polyclonal, Rabbit,IgG
Dilution :	WB 1:500-2000
Purification :	The antibody was affinity-purified from rabbit serum by affinity-chromatography using specific immunogen.
Concentration :	1 mg/ml
Storage Stability :	-15°C to -25°C/1 year(Do not lower than -25°C)
Molecularweight :	24kD
Background :	The protein encoded by this gene is a small GTPase involved in diverse processes including angiogenesis, vascular homeostasis and regeneration, cell adhesion, and neuronal axon guidance. Mutations in this gene are found in many invasive cancers. [provided by RefSeq, Jul 2015],
Function :	function:Regulates the organization of the actin cytoskeleton.,similarity:Belongs to the small GTPase superfamily. Ras family.,subcellular location:Inner surface of plasma membrane possibly with attachment requiring acylation of the C-terminal cysteine (By similarity with RAS).,subunit:Interacts with PLCE1.,
Subcellular Location :	Cell membrane ; Lipid-anchor ; Cytoplasmic side . Inner surface of plasma membrane possibly with attachment requiring acylation of the C-terminal cysteine (By similarity with RAS).
Expression :	Adipocyte,Brain,Uterus,
Tag :	orthogonal
Sort :	25272
No4 :	1
Host :	Rabbit
Modifications :	Phospho

Products Images



Western Blot analysis of A549 cell,2, LPS 100ng/mL 30min treated ,using primary antibody at 1:1000 dilution. Secondary antibody(catalog#:RS23920) was diluted at 1:10000