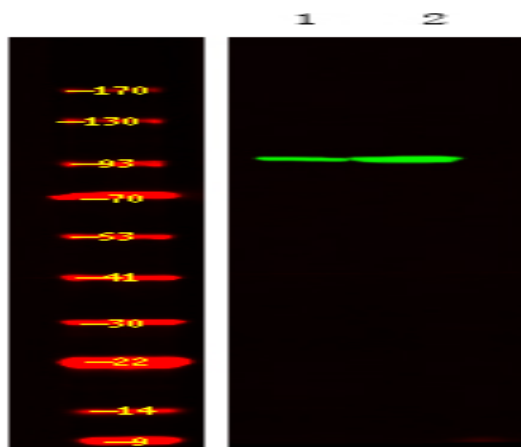


HSP105 (Phospho Ser809) rabbit pAb

Catalog No :	YP1791
Reactivity :	Human;Mouse;Rat
Applications :	WB
Target :	HSP105
Fields :	>>Protein processing in endoplasmic reticulum
Gene Name :	HSPH1 HSP105 HSP110 KIAA0201
Protein Name :	HSP105 (Phospho-Ser809)
Human Gene Id :	10808
Human Swiss Prot No :	Q92598
Mouse Gene Id :	15505
Mouse Swiss Prot No :	Q61699
Rat Gene Id :	288444
Rat Swiss Prot No :	Q66HA8
Immunogen :	Synthesized peptide derived from human HSP105 (Phospho-Ser809)
Specificity :	This antibody detects endogenous levels of HSP105 (Phospho-Ser809) at Human, Mouse,Rat
Formulation :	Liquid in PBS containing 50% glycerol, 0.5% BSA and 0.02% sodium azide.
Source :	Polyclonal, Rabbit,IgG
Dilution :	WB 1:500-2000

Purification :	The antibody was affinity-purified from rabbit serum by affinity-chromatography using specific immunogen.
Concentration :	1 mg/ml
Storage Stability :	-15°C to -25°C/1 year(Do not lower than -25°C)
Molecularweight :	94kD
Function :	function:Prevents the aggregation of denatured proteins in cells under severe stress, on which the ATP levels decrease markedly. Inhibits HSPA8/HSC70 ATPase and chaperone activities.,PTM:Phosphorylation on Ser-509 may be important for regulation of the HSPA8/HSC70 chaperone activity.,similarity:Belongs to the heat shock protein 70 family.,subunit:Interacts with HSPA8/HSC70.,tissue specificity:Highly expressed in testis. Present at lower levels in most brain regions, except cerebellum. Overexpressed in cancer cells.,
Subcellular Location :	Cytoplasm .
Expression :	Highly expressed in testis. Present at lower levels in most brain regions, except cerebellum. Overexpressed in cancer cells.
Tag :	orthogonal
Sort :	25270
No4 :	1
Host :	Rabbit
Modifications :	Phospho

Products Images



Western Blot analysis of MCF7 cell, 2, LPS 100ng/mL 30min treated ,using primary antibody at 1:1000 dilution. Secondary antibody(catalog#:RS23920) was diluted at 1:10000