

## MKP-7 (Phospho Ser446) rabbit pAb

<b>Catalog No :</b>	YP1785
<b>Reactivity :</b>	Human;Mouse;Rat
<b>Applications :</b>	WB
<b>Target :</b>	MKP-7
<b>Fields :</b>	>>MAPK signaling pathway
<b>Gene Name :</b>	DUSP16 KIAA1700 MKP7
<b>Protein Name :</b>	MKP-7 (Phospho-Ser446)
<b>Human Gene Id :</b>	80824
<b>Human Swiss Prot No :</b>	Q9BY84
<b>Immunogen :</b>	Synthesized peptide derived from human MKP-7 (Phospho-Ser446)
<b>Specificity :</b>	This antibody detects endogenous levels of MKP-7 (Phospho-Ser446) at Human, Mouse,Rat
<b>Formulation :</b>	Liquid in PBS containing 50% glycerol, 0.5% BSA and 0.02% sodium azide.
<b>Source :</b>	Polyclonal, Rabbit,IgG
<b>Dilution :</b>	WB 1:500-2000
<b>Purification :</b>	The antibody was affinity-purified from rabbit serum by affinity-chromatography using specific immunogen.
<b>Concentration :</b>	1 mg/ml
<b>Storage Stability :</b>	-15°C to -25°C/1 year(Do not lower than -25°C)
<b>Molecularweight :</b>	73kD

**Background :** dual specificity phosphatase 16(DUSP16) Homo sapiens This gene encodes a mitogen-activated protein kinase phosphatase that is a member of the dual specificity protein phosphatase subfamily. These phosphatases inactivate their target kinases by dephosphorylating both the phosphoserine/threonine and phosphotyrosine residues. The encoded protein specifically regulates the c-Jun amino-terminal kinase (JNK) and extracellular signal-regulated kinase (ERK) pathways.[provided by RefSeq, May 2010],

**Function :** catalytic activity:A phosphoprotein + H(2)O = a protein + phosphate.,catalytic activity:Protein tyrosine phosphate + H(2)O = protein tyrosine + phosphate.,function:Involved in the inactivation of MAP kinases.,similarity:Belongs to the protein-tyrosine phosphatase family. Non-receptor class dual specificity subfamily.,similarity:Contains 1 rhodanese domain.,similarity:Contains 1 tyrosine-protein phosphatase domain.,

**Subcellular Location :** Cytoplasm. Nucleus. Cytoplasmic vesicle. After dissociation upon AGTR stimulation, re-associates with ARRB2 on endocytic vesicles.

**Expression :** Bone marrow,Brain,Duodenum,PCR rescued clones,

**Tag :** orthogonal

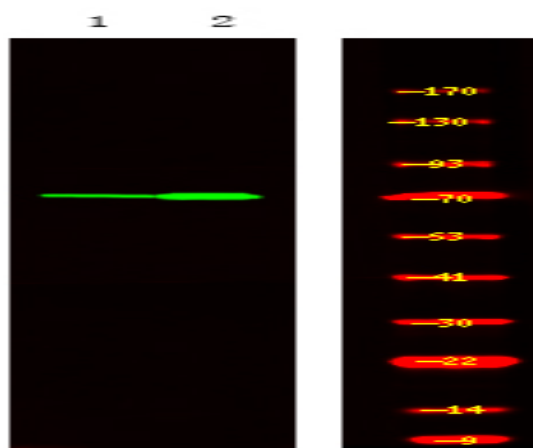
**Sort :** 25264

**No4 :** 1

**Host :** Rabbit

**Modifications :** Phospho

## Products Images



Western Blot analysis of 1 HeLa cell, 2, LPS 100ng/mL 30min treated ,using primary antibody at 1:1000 dilution. Secondary antibody(catalog#:RS23920) was diluted at 1:10000