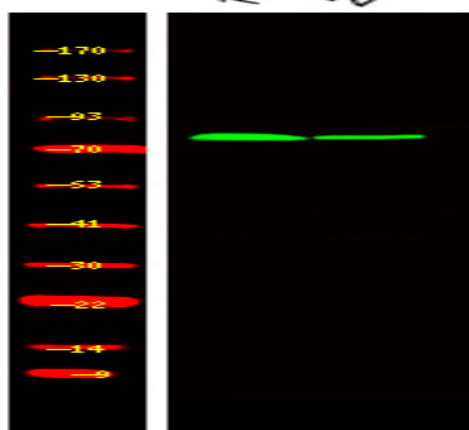


Kizuna (Phospho Thr379) rabbit pAb

Catalog No :	YP1784
Reactivity :	Human;Mouse;Rat
Applications :	WB
Target :	Kizuna
Gene Name :	PLK1S1 C20orf19 KIZ NCRNA00153 HT013
Protein Name :	Kizuna (Phospho-Thr379)
Human Gene Id :	55857
Human Swiss Prot No :	Q2M2Z5
Mouse Gene Id :	228730
Mouse Swiss Prot No :	Q3UXL4
Immunogen :	Synthesized peptide derived from human Kizuna (Phospho-Thr379)
Specificity :	This antibody detects endogenous levels of Kizuna (Phospho-Thr379) at Human, Mouse,Rat
Formulation :	Liquid in PBS containing 50% glycerol, 0.5% BSA and 0.02% sodium azide.
Source :	Polyclonal, Rabbit,IgG
Dilution :	WB 1:500-2000
Purification :	The antibody was affinity-purified from rabbit serum by affinity-chromatography using specific immunogen.
Concentration :	1 mg/ml
Storage Stability :	-15°C to -25°C/1 year(Do not lower than -25°C)

Molecularweight : 74kD**Subcellular Location :** Cytoplasm, cytoskeleton, microtubule organizing center, centrosome .
Cytoplasm, cytoskeleton, cilium basal body . Localizes to centrosomes throughout the cell cycle. After centrosome duplication, it usually remains associated only with the mother centrosome, containing the older mature centriole and particles surrounding it. During prophase, additional particles accumulate around both separating centrosomes. Does not accumulate at the microtubule minus ends, but instead localizes to the centrosomes and centrosome-surrounding area in a microtubule-independent and dependent manner, respectively. .**Expression :** Uterus,**Tag :** orthogonal**Sort :** 25263**No4 :** 1**Host :** Rabbit**Modifications :** Phospho

Products Images



Western Blot analysis of HeLa cell, 2, LPS 100ng/mL 30min treated ,using primary antibody at 1:1000 dilution. Secondary antibody(catalog#:RS23920) was diluted at 1:10000