

**BCLAF1 (Phospho Ser531) rabbit pAb**

<b>Catalog No :</b>	YP1781
<b>Reactivity :</b>	Human;Mouse;Rat
<b>Applications :</b>	WB
<b>Target :</b>	BCLAF1
<b>Gene Name :</b>	BCLAF1 BTF KIAA0164
<b>Protein Name :</b>	BCLAF1 (Phospho-Ser531)
<b>Human Gene Id :</b>	9774
<b>Human Swiss Prot No :</b>	Q9NYF8
<b>Mouse Gene Id :</b>	72567
<b>Mouse Swiss Prot No :</b>	Q8K019
<b>Immunogen :</b>	Synthesized peptide derived from human BCLAF1 (Phospho-Ser531)
<b>Specificity :</b>	This antibody detects endogenous levels of BCLAF1 (Phospho-Ser531) at Human, Mouse,Rat
<b>Formulation :</b>	Liquid in PBS containing 50% glycerol, 0.5% BSA and 0.02% sodium azide.
<b>Source :</b>	Polyclonal, Rabbit,IgG
<b>Dilution :</b>	WB 1:500-2000
<b>Purification :</b>	The antibody was affinity-purified from rabbit serum by affinity-chromatography using specific immunogen.
<b>Concentration :</b>	1 mg/ml
<b>Storage Stability :</b>	-15°C to -25°C/1 year(Do not lower than -25°C)

**Molecularweight :** 101kD

**Background :** This gene encodes a transcriptional repressor that interacts with several members of the BCL2 family of proteins. Overexpression of this protein induces apoptosis, which can be suppressed by co-expression of BCL2 proteins. The protein localizes to dot-like structures throughout the nucleus, and redistributes to a zone near the nuclear envelope in cells undergoing apoptosis. Multiple transcript variants encoding different isoforms have been found for this gene. [provided by RefSeq, Jul 2008],

**Function :** function:Death-promoting transcriptional repressor.,sequence caution:Contaminating sequence. Potential poly-A sequence.,subunit:Interacts with Bcl-2 related proteins, EMD, with the adenovirus E1B 19 kDa protein and with DNA.,tissue specificity:Ubiquitous.,

**Subcellular Location :** Cytoplasm. Nucleus. Nucleus speckle . Nucleus, nucleoplasm .

**Expression :** Ubiquitous.

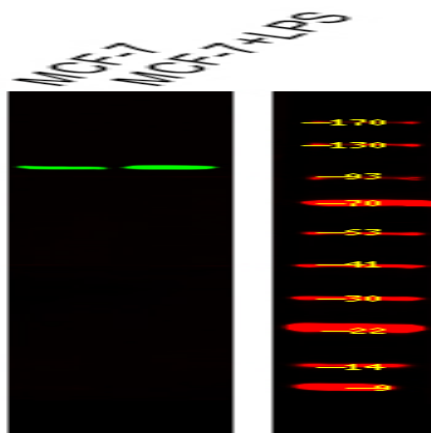
**Sort :** 25260

**No4 :** 1

**Host :** Rabbit

**Modifications :** Phospho

## Products Images



Western Blot analysis of various,using primary antibody at 1:1000 dilution. Secondary antibody(catalog#:RS23920) was diluted at 1:10000