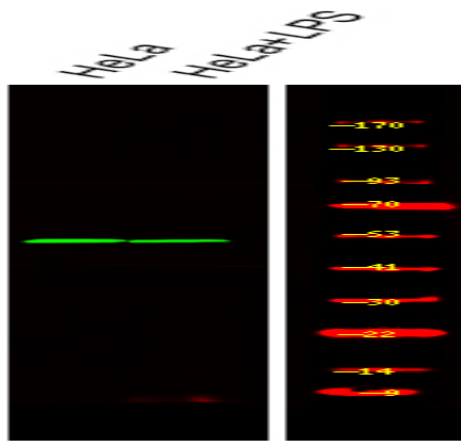


MST3 (Phospho Thr18) rabbit pAb

Catalog No :	YP1776
Reactivity :	Human;Mouse;Rat
Applications :	WB
Target :	MST3
Gene Name :	STK24 MST3 STK3
Protein Name :	MST3 (Phospho-Thr18)
Human Gene Id :	8428
Human Swiss Prot No :	Q9Y6E0
Mouse Gene Id :	223255
Mouse Swiss Prot No :	Q99KH8
Rat Gene Id :	361092
Rat Swiss Prot No :	B0LT89
Immunogen :	Synthesized peptide derived from human MST3 (Phospho-Thr18)
Specificity :	This antibody detects endogenous levels of MST3 (Phospho-Thr18) at Human, Mouse,Rat
Formulation :	Liquid in PBS containing 50% glycerol, 0.5% BSA and 0.02% sodium azide.
Source :	Polyclonal, Rabbit,IgG
Dilution :	WB 1:500-2000
Purification :	The antibody was affinity-purified from rabbit serum by affinity-chromatography using specific immunogen.

Concentration :	1 mg/ml
Storage Stability :	-15°C to -25°C/1 year(Do not lower than -25°C)
Observed Band :	50kD
Background :	This gene encodes a serine/threonine protein kinase that functions upstream of mitogen-activated protein kinase (MAPK) signaling. The encoded protein is cleaved into two chains by caspases; the N-terminal fragment (MST3/N) translocates to the nucleus and promotes programmed cells death. There is a pseudogene for this gene on chromosome X. Alternative splicing results in multiple transcript variants. [provided by RefSeq, Nov 2013],
Function :	catalytic activity:ATP + a protein = ADP + a phosphoprotein.,cofactor:Manganese. Only isoform A requires manganese.,function:Protein kinase that act on both serine and threonine residues.,PTM:Autophosphorylated. Isoform B is activated by phosphorylation by PKA.,similarity:Belongs to the protein kinase superfamily. STE Ser/Thr protein kinase family. STE20 subfamily.,similarity:Contains 1 protein kinase domain.,tissue specificity:Isoform A is ubiquitous. Isoform B is expressed in brain with high expression in hippocampus and cerebral cortex.,
Subcellular Location :	Cytoplasm. Nucleus. Membrane. The truncated form (MST3/N) translocates to the nucleus. Colocalizes with STK38L in the membrane.
Expression :	Isoform A is ubiquitous. Isoform B is expressed in brain with high expression in hippocampus and cerebral cortex.
Sort :	25255
No4 :	1
Host :	Rabbit
Modifications :	Phospho

Products Images



Western Blot analysis of various, using primary antibody at 1:1000 dilution. Secondary antibody (catalog#:RS23920) was diluted at 1:10000