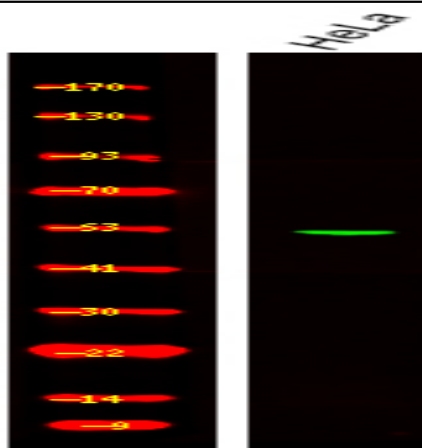


EIF5 (Phospho Ser389+Ser390) rabbit pAb

Catalog No :	YP1773
Reactivity :	Human;Mouse;Rat
Applications :	WB
Target :	EIF5
Gene Name :	EIF5
Protein Name :	EIF5 (Phospho-Ser389+Ser390)
Human Gene Id :	1983
Human Swiss Prot No :	P55010
Mouse Gene Id :	100047658
Mouse Swiss Prot No :	P59325
Rat Gene Id :	56783
Rat Swiss Prot No :	Q07205
Immunogen :	Synthesized peptide derived from human EIF5 (Phospho-Ser389+Ser390)
Specificity :	This antibody detects endogenous levels of EIF5 (Phospho-Ser389+Ser390) at Human, Mouse,Rat
Formulation :	Liquid in PBS containing 50% glycerol, 0.5% BSA and 0.02% sodium azide.
Source :	Polyclonal, Rabbit,IgG
Dilution :	WB 1:500-2000
Purification :	The antibody was affinity-purified from rabbit serum by affinity-chromatography using specific immunogen.

Concentration :	1 mg/ml
Storage Stability :	-15°C to -25°C/1 year(Do not lower than -25°C)
Observed Band :	50kD
Background :	Eukaryotic translation initiation factor-5 (EIF5) interacts with the 40S initiation complex to promote hydrolysis of bound GTP with concomitant joining of the 60S ribosomal subunit to the 40S initiation complex. The resulting functional 80S ribosomal initiation complex is then active in peptidyl transfer and chain elongations (summary by Si et al., 1996 [PubMed 8663286]).[supplied by OMIM, May 2010],
Function :	function:Catalyzes the hydrolysis of GTP bound to the 40S ribosomal initiation complex (40S.mRNA.Met-tRNA[F].eIF-2.GTP) with the subsequent joining of a 60S ribosomal subunit resulting in the release of eIF-2 and the guanine nucleotide. The subsequent joining of a 60S ribosomal subunit results in the formation of a functional 80S initiation complex (80S.mRNA.Met-tRNA[F]).,similarity:Belongs to the eIF-2-beta/eIF-5 family.,similarity:Contains 1 W2 domain.,
Subcellular Location :	nucleus,cytoplasm,cytosol,plasma membrane,cell-cell adherens junction,
Expression :	Brain,Epithelium,Lymph,Pooled,Uterus,
Sort :	25252
No4 :	1
Host :	Rabbit
Modifications :	Phospho

Products Images



Western Blot analysis of various, using primary antibody at 1:1000 dilution. Secondary antibody (catalog#:RS23920) was diluted at 1:10000