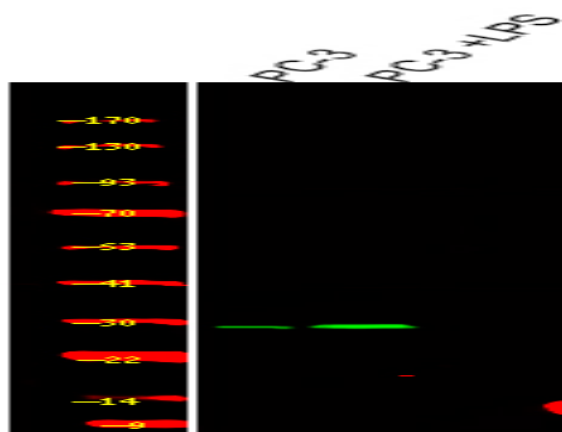


PDX1 (Phospho Ser66) rabbit pAb

Catalog No :	YP1757
Reactivity :	Human;Mouse;Rat
Applications :	WB
Target :	PDX1
Fields :	>>Insulin secretion;>>Type II diabetes mellitus;>>Maturity onset diabetes of the young
Gene Name :	PDX1 IPF1
Protein Name :	PDX1 (Phospho-Ser66)
Human Gene Id :	3651
Human Swiss Prot No :	P52945
Mouse Gene Id :	18609
Mouse Swiss Prot No :	P52946
Rat Gene Id :	29535
Rat Swiss Prot No :	P52947
Immunogen :	Synthesized peptide derived from human PDX1 (Phospho-Ser66)
Specificity :	This antibody detects endogenous levels of PDX1 (Phospho-Ser66) at Human, Mouse,Rat
Formulation :	Liquid in PBS containing 50% glycerol, 0.5% BSA and 0.02% sodium azide.
Source :	Polyclonal, Rabbit,IgG
Dilution :	WB 1:500-2000

Purification :	The antibody was affinity-purified from rabbit serum by affinity-chromatography using specific immunogen.
Concentration :	1 mg/ml
Storage Stability :	-15°C to -25°C/1 year(Do not lower than -25°C)
Molecularweight :	31kD
Background :	The protein encoded by this gene is a transcriptional activator of several genes, including insulin, somatostatin, glucokinase, islet amyloid polypeptide, and glucose transporter type 2. The encoded nuclear protein is involved in the early development of the pancreas and plays a major role in glucose-dependent regulation of insulin gene expression. Defects in this gene are a cause of pancreatic agenesis, which can lead to early-onset insulin-dependent diabetes mellitus (NIDDM), as well as maturity onset diabetes of the young type 4 (MODY4). [provided by RefSeq, Jul 2008],
Function :	disease:Defects in PDX1 are a cause of pancreatic agenesis [MIM:260370]. This autosomal recessive disorder is characterized by absence or hypoplasia of pancreas, leading to early-onset insulin-dependent diabetes mellitus. This was found in a frameshift mutation that produces a truncated protein and results in a second initiation that produces a second protein that act as a dominant negative mutant.,disease:Defects in PDX1 are the cause of maturity onset diabetes noninsulin-dependent diabetes mellitus (NIDDM) [MIM:125853]; also known as diabetes mellitus type II.,disease:Defects in PDX1 are the cause of maturity onset diabetes of the young type 4 (MODY4) [MIM:606392]; also symbolized MODY-4. MODY [MIM:606391] is a form of diabetes mellitus characterized by an autosomal dominant mode of inheritance, age of onset of 25 years or younger and a primary defect in insulin secretion.,domain:The A
Subcellular Location :	Nucleus. Cytoplasm, cytosol .
Expression :	Duodenum and pancreas (Langerhans islet beta cells and small subsets of endocrine non-beta-cells, at low levels in acinar cells).
Sort :	25236
No4 :	1
Host :	Rabbit
Modifications :	Phospho

Products Images



Western Blot analysis of various, using primary antibody at 1:1000 dilution. Secondary antibody (catalog#:RS23920) was diluted at 1:10000