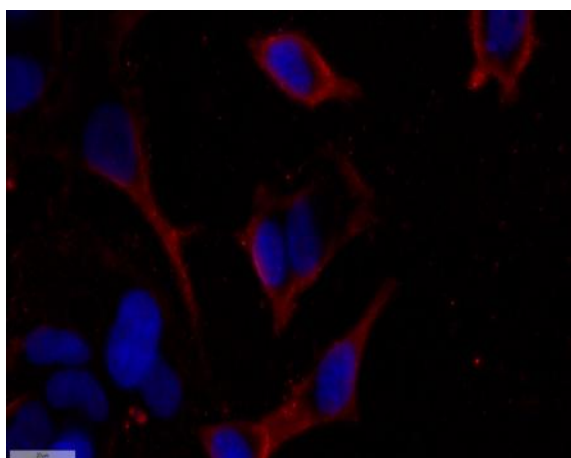


## USP28 (Phospho Ser67) rabbit pAb

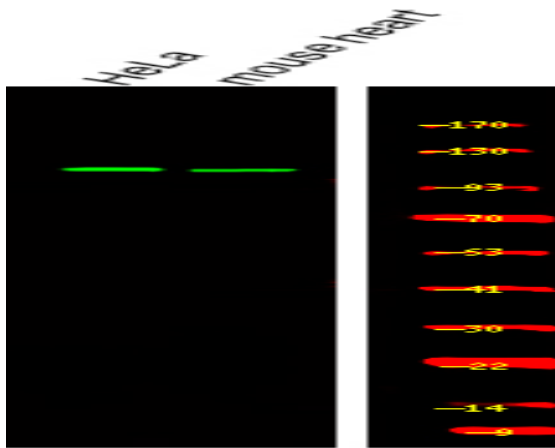
<b>Catalog No :</b>	YP1754
<b>Reactivity :</b>	Human;Mouse;Rat
<b>Applications :</b>	WB
<b>Target :</b>	USP28
<b>Gene Name :</b>	USP28 KIAA1515
<b>Protein Name :</b>	USP28 (Phospho-Ser67)
<b>Human Gene Id :</b>	57646
<b>Human Swiss Prot No :</b>	Q96RU2
<b>Mouse Gene Id :</b>	235323
<b>Mouse Swiss Prot No :</b>	Q5I043
<b>Rat Gene Id :</b>	315639
<b>Rat Swiss Prot No :</b>	D3ZJ96
<b>Immunogen :</b>	Synthesized peptide derived from human USP28 (Phospho-Ser67)
<b>Specificity :</b>	This antibody detects endogenous levels of USP28 (Phospho-Ser67) at Human, Mouse,Rat
<b>Formulation :</b>	Liquid in PBS containing 50% glycerol, 0.5% BSA and 0.02% sodium azide.
<b>Source :</b>	Polyclonal, Rabbit,IgG
<b>Dilution :</b>	WB 1:500-2000
<b>Purification :</b>	The antibody was affinity-purified from rabbit serum by affinity-chromatography using specific immunogen.

<b>Concentration :</b>	1 mg/ml
<b>Storage Stability :</b>	-15°C to -25°C/1 year(Do not lower than -25°C)
<b>Molecularweight :</b>	118kD
<b>Background :</b>	The protein encoded by this gene is a deubiquitinase involved in the DNA damage pathway and DNA damage-induced apoptosis. Overexpression of this gene is seen in several cancers. [provided by RefSeq, Oct 2016],
<b>Function :</b>	catalytic activity:Ubiquitin C-terminal thioester + H(2)O = ubiquitin + a thiol.,PTM:Phosphorylated upon DNA damage, probably by ATM or ATR.,similarity:Belongs to the peptidase C19 family.,similarity:Contains 1 UIM (ubiquitin-interacting motif) repeat.,
<b>Subcellular Location :</b>	Nucleus, nucleoplasm .
<b>Expression :</b>	Brain,Eye,
<b>Sort :</b>	25233
<b>No4 :</b>	1
<b>Host :</b>	Rabbit
<b>Modifications :</b>	Phospho

## Products Images



Immunofluorescence analysis of MCF7 cell. 1,primary Antibody was diluted at 1:100(4°C overnight). 2, Goat Anti Rabbit IgG (H&L) - AFluor 594 Secondary antibody(catalog No: RS3611) was diluted at 1:500(room temperature, 50min).



Western Blot analysis of various, using primary antibody at 1:1000 dilution. Secondary antibody(catalog#:RS23920) was diluted at 1:10000