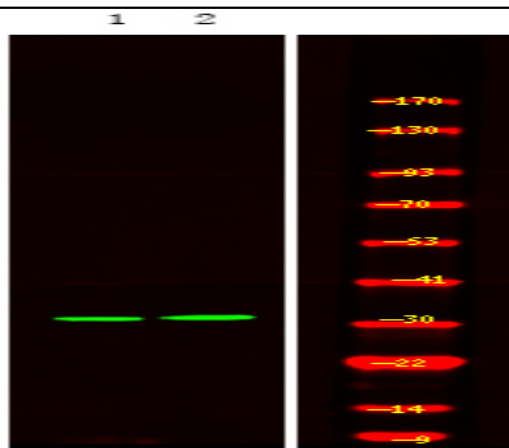


HNRPA0 (Phospho Ser84) rabbit pAb

Catalog No :	YP1740
Reactivity :	Human;Mouse;Rat
Applications :	WB
Target :	HNRPA0
Gene Name :	HNRNPA0 HNRPA0
Protein Name :	HNRPA0 (Phospho-Ser84)
Human Gene Id :	10949
Human Swiss Prot No :	Q13151
Mouse Gene Id :	77134
Mouse Swiss Prot No :	Q9CX86
Immunogen :	Synthesized peptide derived from human HNRPA0 (Phospho-Ser84)
Specificity :	This antibody detects endogenous levels of HNRPA0 (Phospho-Ser84) at Human, Mouse,Rat
Formulation :	Liquid in PBS containing 50% glycerol, 0.5% BSA and 0.02% sodium azide.
Source :	Polyclonal, Rabbit,IgG
Dilution :	WB 1:500-2000
Purification :	The antibody was affinity-purified from rabbit serum by affinity-chromatography using specific immunogen.
Concentration :	1 mg/ml
Storage Stability :	-15°C to -25°C/1 year(Do not lower than -25°C)

Observed Band :	30kD
Background :	This gene belongs to the A/B subfamily of ubiquitously expressed heterogeneous nuclear ribonucleoproteins (hnRNPs). The hnRNPs are RNA binding proteins and they complex with heterogeneous nuclear RNA (hnRNA). These proteins are associated with pre-mRNAs in the nucleus and appear to influence pre-mRNA processing and other aspects of mRNA metabolism and transport. While all of the hnRNPs are present in the nucleus, some seem to shuttle between the nucleus and the cytoplasm. The hnRNP proteins have distinct nucleic acid binding properties. The protein encoded by this gene has two repeats of quasi-RRM domains that bind RNAs, followed by a glycine-rich C-terminus. [provided by RefSeq, Jul 2008],
Function :	function:This protein is a component of ribonucleosomes.,PTM:Arg-291 is dimethylated, probably to asymmetric dimethylarginine.,similarity:Contains 2 RRM (RNA recognition motif) domains.,subcellular location:Component of ribonucleosomes.,
Subcellular Location :	Nucleus . Component of ribonucleosomes. .
Expression :	Brain,Colon carcinoma,Eye,Lung,Muscle,Ovarian carcinoma,Pla
Tag :	orthogonal
Sort :	25219
No4 :	1
Host :	Rabbit
Modifications :	Phospho

Products Images



Western Blot analysis of 1 HeLa cell, 2 LPS 100ng/mL 30min treated ,using primary antibody at 1:1000 dilution. Secondary antibody(catalog#:RS23920) was diluted at 1:10000