

c-Fes (Phospho Tyr713) rabbit pAb

Catalog No :	YP1721
Reactivity :	Human;Mouse;Rat
Applications :	WB
Target :	c-Fes
Fields :	>>Axon guidance
Gene Name :	FES FPS
Protein Name :	c-Fes (Phospho-Tyr713)
Human Gene Id :	2242
Human Swiss Prot No :	P07332
Mouse Gene Id :	14159
Mouse Swiss Prot No :	P16879
Immunogen :	Synthesized peptide derived from human c-Fes (Phospho-Tyr713)
Specificity :	This antibody detects endogenous levels of c-Fes (Phospho-Tyr713) at Human, Mouse,Rat
Formulation :	Liquid in PBS containing 50% glycerol, 0.5% BSA and 0.02% sodium azide.
Source :	Polyclonal, Rabbit,IgG
Dilution :	WB 1:500-2000
Purification :	The antibody was affinity-purified from rabbit serum by affinity-chromatography using specific immunogen.
Concentration :	1 mg/ml

Storage Stability : -15°C to -25°C/1 year(Do not lower than -25°C)

Molecularweight : 90kD

Background : This gene encodes the human cellular counterpart of a feline sarcoma retrovirus protein with transforming capabilities. The gene product has tyrosine-specific protein kinase activity and that activity is required for maintenance of cellular transformation. Its chromosomal location has linked it to a specific translocation event identified in patients with acute promyelocytic leukemia but it is also involved in normal hematopoiesis as well as growth factor and cytokine receptor signaling. Alternative splicing results in multiple variants encoding different isoforms.[provided by RefSeq, Jan 2009],

Function : catalytic activity:ATP + a [protein]-L-tyrosine = ADP + a [protein]-L-tyrosine phosphate.,similarity:Belongs to the protein kinase superfamily. Tyr protein kinase family.,similarity:Belongs to the protein kinase superfamily. Tyr protein kinase family. Fes/fps subfamily.,similarity:Contains 1 FCH domain.,similarity:Contains 1 protein kinase domain.,similarity:Contains 1 SH2 domain.,

Subcellular Location : Cytoplasm, cytosol. Cytoplasm, cytoskeleton. Cell membrane; Peripheral membrane protein; Cytoplasmic side. Cytoplasmic vesicle. Golgi apparatus. Cell junction, focal adhesion. Distributed throughout the cytosol when the kinase is not activated. Association with microtubules requires activation of the kinase activity. Shuttles between focal adhesions and cell-cell contacts in epithelial cells. Recruited to the lateral cell membrane in polarized epithelial cells by interaction with phosphorylated EZR. Detected at tubular membrane structures in the cytoplasm and at the cell periphery.

Expression : Widely expressed. Detected in adult colon epithelium (at protein level) (PubMed:16455651, PubMed:19051325). Expressed in melanocytes (at protein level) (PubMed:28463229).

Tag : orthogonal

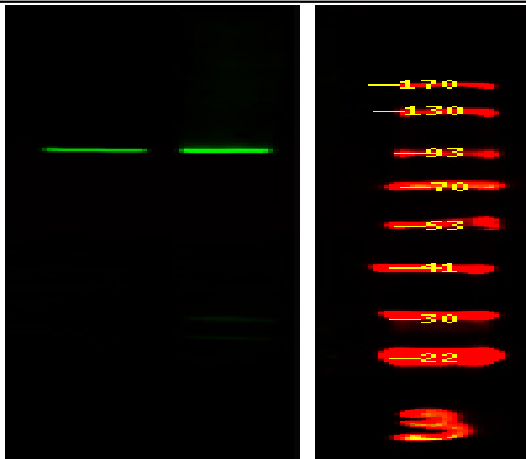
Sort : 25200

No4 : 1

Host : Rabbit

Modifications : Phospho

Products Images



Western Blot analysis of 1 HepG2 cell, 2 LPS 100ng/mL 30min treated ,using primary antibody at 1:1000 dilution. Secondary antibody(catalog#:RS23920) was diluted at 1:10000