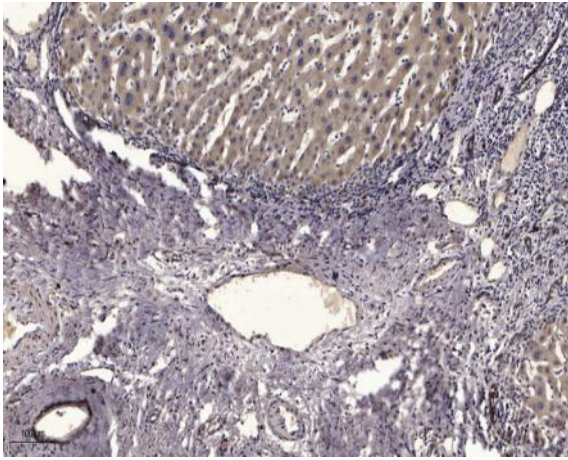


Skp2 (Phospho Ser64) rabbit pAb

| | |
|------------------------------|---|
| Catalog No : | YP1496 |
| Reactivity : | Human;Rat;Mouse; |
| Applications : | WB;ELISA;IHC |
| Target : | Skp2 |
| Fields : | >>FoxO signaling pathway;>>Cell cycle;>>Ubiquitin mediated proteolysis;>>mTOR signaling pathway;>>Epstein-Barr virus infection;>>Pathways in cancer;>>Viral carcinogenesis;>>Small cell lung cancer |
| Gene Name : | SKP2 FBXL1 |
| Protein Name : | Skp2 (Ser64) |
| Human Gene Id : | 6502 |
| Human Swiss Prot No : | Q13309 |
| Mouse Gene Id : | 27401 |
| Mouse Swiss Prot No : | Q9Z0Z3 |
| Immunogen : | Synthesized phospho peptide around human Skp2 (Ser64) |
| Specificity : | This antibody detects endogenous levels of Human Skp2 (phospho-Ser64) |
| Formulation : | Liquid in PBS containing 50% glycerol, 0.5% BSA and 0.02% sodium azide. |
| Source : | Polyclonal, Rabbit,IgG |
| Dilution : | WB 1:500-2000;IHC 1:50-300; ELISA 2000-20000 |
| Purification : | The antibody was affinity-purified from rabbit serum by affinity-chromatography using specific immunogen. |
| Concentration : | 1 mg/ml |

| | |
|-------------------------------|---|
| Storage Stability : | -15°C to -25°C/1 year(Do not lower than -25°C) |
| Observed Band : | 47kD |
| Cell Pathway : | Cell_Cycle_G1S;Cell_Cycle_G2M_DNA;Ubiquitin mediated proteolysis;Pathways in cancer;Small cell lung cancer; |
| Background : | <p>This gene encodes a member of the F-box protein family which is characterized by an approximately 40 amino acid motif, the F-box. The F-box proteins constitute one of the four subunits of ubiquitin protein ligase complex called SCFs (SKP1-cullin-F-box), which function in phosphorylation-dependent ubiquitination. The F-box proteins are divided into 3 classes: Fbws containing WD-40 domains, Fbls containing leucine-rich repeats, and Fbxs containing either different protein-protein interaction modules or no recognizable motifs. The protein encoded by this gene belongs to the Fbls class; in addition to an F-box, this protein contains 10 tandem leucine-rich repeats. This protein is an essential element of the cyclin A-CDK2 S-phase kinase. It specifically recognizes phosphorylated cyclin-dependent kinase inhibitor 1B (CDKN1B, also referred to as p27 or KIP1) predominantly in S phase and int</p> |
| Function : | <p>function:Substrate recognition component of a SCF (SKP1-CUL1-F-box protein) E3 ubiquitin-protein ligase complex which mediates the ubiquitination and subsequent proteasomal degradation of target proteins involved in cell cycle progression, signal transduction and transcription. Specifically recognizes phosphorylated CDKN1B/p27kip and is involved in regulation of G1/S transition. Degradation of CDKN1B/p27kip also requires CKS1. Recognizes target proteins ORC1L, CDT1, RBL2, MLL, CDK9, RAG2, FOXO1A, UBP43, and probably MYC, TOB1 and TAL1. Degradation of TAL1 also requires STUB1. Recognizes CDKN1A in association with CCNE1 or CCNE2 and CDK2.,pathway:Protein modification; protein ubiquitination.,similarity:Contains 1 F-box domain.,similarity:Contains 8 LRR (leucine-rich) repeats.,subunit:Part of the SCF(SKP2) complex consisting of CUL1, RBX1, SKP1 and SKP2. Interacts directly with CUL1 and SK</p> |
| Subcellular Location : | Cytoplasm . Nucleus . |
| Expression : | Epithelium,Liver,Placenta,Prostatic carcinoma, |
| Sort : | 16357 |
| No4 : | 1 |
| Host : | Rabbit |
| Modifications : | Phospho |

Products Images



Immunohistochemical analysis of paraffin-embedded human liver cancer. 1, Antibody was diluted at 1:200(4° overnight). 2, Tris-EDTA,pH9.0 was used for antigen retrieval. 3,Secondary antibody was diluted at 1:200(room temperature, 45min).