

## SF3B1 (Phospho Thr313) rabbit pAb

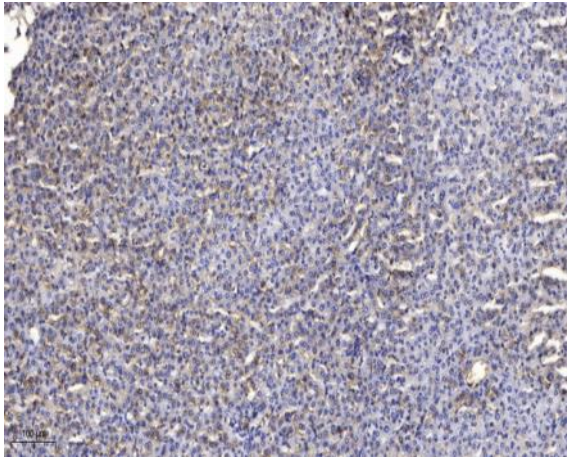
<b>Catalog No :</b>	YP1485
<b>Reactivity :</b>	Human;Mouse
<b>Applications :</b>	WB;IHC
<b>Target :</b>	SF3B1
<b>Fields :</b>	>>Spliceosome
<b>Gene Name :</b>	SF3B1 SAP155
<b>Protein Name :</b>	SF3B1 (Thr313)
<b>Human Gene Id :</b>	23451
<b>Human Swiss Prot No :</b>	O75533
<b>Mouse Swiss Prot No :</b>	Q99NB9
<b>Immunogen :</b>	Synthesized phospho peptide around human SF3B1 (Thr313)
<b>Specificity :</b>	This antibody detects endogenous levels of Human Mouse SF3B1 (phospho-Thr313)
<b>Formulation :</b>	Liquid in PBS containing 50% glycerol, 0.5% BSA and 0.02% sodium azide.
<b>Source :</b>	Polyclonal, Rabbit,IgG
<b>Dilution :</b>	WB 1:500-2000;IHC 1:50-300
<b>Purification :</b>	The antibody was affinity-purified from rabbit serum by affinity-chromatography using specific immunogen.
<b>Concentration :</b>	1 mg/ml
<b>Storage Stability :</b>	-15°C to -25°C/1 year(Do not lower than -25°C)

---

<b>Observed Band :</b>	145kD
<b>Cell Pathway :</b>	Spliceosome;
<b>Background :</b>	<p>This gene encodes subunit 1 of the splicing factor 3b protein complex. Splicing factor 3b, together with splicing factor 3a and a 12S RNA unit, forms the U2 small nuclear ribonucleoproteins complex (U2 snRNP). The splicing factor 3b/3a complex binds pre-mRNA upstream of the intron's branch site in a sequence independent manner and may anchor the U2 snRNP to the pre-mRNA. Splicing factor 3b is also a component of the minor U12-type spliceosome. The carboxy-terminal two-thirds of subunit 1 have 22 non-identical, tandem HEAT repeats that form rod-like, helical structures. Alternative splicing results in multiple transcript variants encoding different isoforms. [provided by RefSeq, Jul 2008],</p>
<b>Function :</b>	<p>function:Subunit of the splicing factor SF3B required for 'A' complex assembly formed by the stable binding of U2 snRNP to the branchpoint sequence (BPS) in pre-mRNA. Sequence independent binding of SF3A/SF3B complex upstream of the branch site is essential, it may anchor U2 snRNP to the pre-mRNA. May also be involved in the assembly of the 'E' complex. Belongs also to the minor U12-dependent spliceosome, which is involved in the splicing of rare class of nuclear pre-mRNA intron.,PTM:Phosphorylated. Phosphorylation occurs concomitantly with the splicing catalytic steps. Phosphorylation on Thr-244, Thr-248 and Thr-313 by cyclin-dependent kinases promotes interaction with PPP1R8 during mitosis.,similarity:Belongs to the SF3B1 family.,similarity:Contains 11 HEAT repeats.,subcellular location:During mitosis, transiently dispersed from the nuclear speckles to the cytoplasm.,subunit:Identified</p>
<b>Subcellular Location :</b>	Nucleus . Nucleus speckle. During mitosis, transiently dispersed from the nuclear speckles to the cytoplasm.
<b>Expression :</b>	Brain,Epithelium,Pooled,Testis,Uterus,
<b>Tag :</b>	hot
<b>Sort :</b>	16258
<b>No4 :</b>	1
<b>Host :</b>	Rabbit
<b>Modifications :</b>	Phospho

---

**Products Images**



Immunohistochemical analysis of paraffin-embedded human liver cancer. 1, Antibody was diluted at 1:200(4° overnight). 2, Tris-EDTA,pH9.0 was used for antigen retrieval. 3,Secondary antibody was diluted at 1:200(room temperature, 45min).