

**Scribble (Phospho Ser1220) rabbit pAb**

<b>Catalog No :</b>	YP1479
<b>Reactivity :</b>	Human;Mouse
<b>Applications :</b>	WB;ELISA;IHC
<b>Target :</b>	SCRIB
<b>Fields :</b>	>>Hippo signaling pathway;>>Tight junction;>>Human papillomavirus infection;>>Viral carcinogenesis
<b>Gene Name :</b>	SCRIB CRIB1 KIAA0147 LAP4 SCRB1 VARTUL
<b>Protein Name :</b>	Scribble (Ser1220)
<b>Human Gene Id :</b>	23513
<b>Human Swiss Prot No :</b>	Q14160
<b>Mouse Gene Id :</b>	105782
<b>Mouse Swiss Prot No :</b>	Q80U72
<b>Immunogen :</b>	Synthesized phospho peptide around human Scribble (Ser1220)
<b>Specificity :</b>	This antibody detects endogenous levels of Human Mouse Scribble (phospho-Ser1220)
<b>Formulation :</b>	Liquid in PBS containing 50% glycerol, 0.5% BSA and 0.02% sodium azide.
<b>Source :</b>	Polyclonal, Rabbit,IgG
<b>Dilution :</b>	WB 1:500-2000;IHC 1:50-300; ELISA 2000-20000
<b>Purification :</b>	The antibody was affinity-purified from rabbit serum by affinity-chromatography using specific immunogen.
<b>Concentration :</b>	1 mg/ml

**Storage Stability :** -15°C to -25°C/1 year(Do not lower than -25°C)

**Observed Band :** 179kD

**Background :** This gene encodes a protein that was identified as being similar to the Drosophila scribble protein. The mammalian protein is involved in tumor suppression pathways. As a scaffold protein involved in cell polarization processes, this protein binds to many other proteins. The encoded protein binds to papillomavirus E6 protein via its PDZ domain and the C-terminus of E6. Two alternatively spliced transcript variants that encode different protein isoforms have been found for this gene. [provided by RefSeq, Nov 2011],

**Function :** similarity:Contains 4 PDZ (DHR) domains.,

**Subcellular Location :** Cell membrane ; Peripheral membrane protein. Cell junction . Cell junction, adherens junction. Cell projection, lamellipodium. Cytoplasm. Cell junction, synapse, postsynapse . Cell junction, synapse, presynapse . Targeting to cell-cell junctions which is CDH1-dependent is required for the pro-apoptotic activity. In a subset of CD4+ T-cells, colocalizes with CRTAM at the immunological synapse during the late phase of T-cell activation (By similarity). .

**Expression :** Expressed in kidney, skeletal muscles, liver, lung, breast, intestine, placenta and skin mainly in epithelial cells (at protein level).

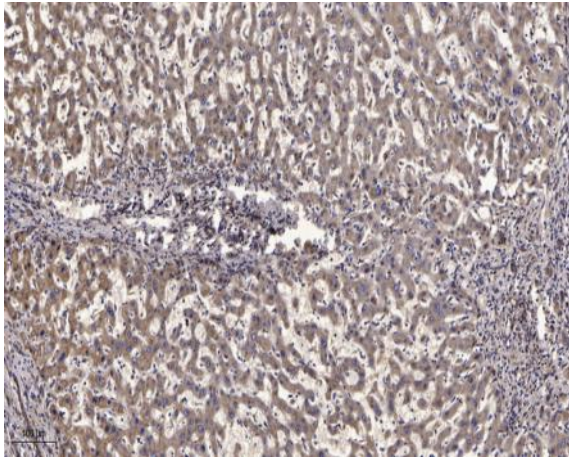
**Sort :** 16187

**No4 :** 1

**Host :** Rabbit

**Modifications :** Phospho

## Products Images



Immunohistochemical analysis of paraffin-embedded human liver cancer. 1, Antibody was diluted at 1:200(4° overnight). 2, Tris-EDTA,pH9.0 was used for antigen retrieval. 3,Secondary antibody was diluted at 1:200(room temperature, 45min).