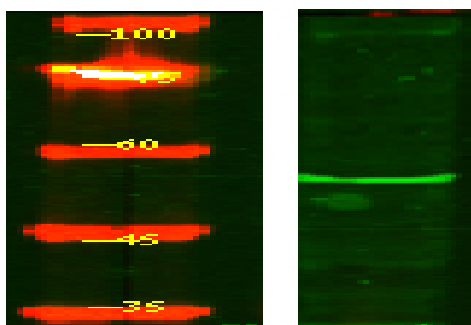


**ENDD1 Polyclonal Antibody**

<b>Catalog No :</b>	YN0698
<b>Reactivity :</b>	Human;Mouse
<b>Applications :</b>	WB;ELISA
<b>Target :</b>	ENDD1
<b>Gene Name :</b>	ENDOD1 KIAA0830
<b>Protein Name :</b>	Endonuclease domain-containing 1 protein (EC 3.1.30.-)
<b>Human Gene Id :</b>	23052
<b>Human Swiss Prot No :</b>	O94919
<b>Mouse Swiss Prot No :</b>	Q8C522
<b>Immunogen :</b>	Synthesized peptide derived from part region of human protein
<b>Specificity :</b>	ENDD1 Polyclonal Antibody detects endogenous levels of protein.
<b>Formulation :</b>	Liquid in PBS containing 50% glycerol, and 0.02% sodium azide.
<b>Source :</b>	Polyclonal, Rabbit,IgG
<b>Dilution :</b>	WB 1:500-2000 ELISA 1:5000-20000
<b>Purification :</b>	The antibody was affinity-purified from rabbit antiserum by affinity-chromatography using epitope-specific immunogen.
<b>Concentration :</b>	1 mg/ml
<b>Storage Stability :</b>	-15°C to -25°C/1 year(Do not lower than -25°C)
<b>Observed Band :</b>	55kD

<b>Cell Pathway :</b>	Apoptosis_Inhibition;Apoptosis_Mitochondrial;Apoptosis_Overview;
<b>Background :</b>	function:May act as a DNase and a RNase .,similarity:Belongs to the DNA/RNA non-specific endonuclease family.,
<b>Function :</b>	function:May act as a DNase and a RNase .,similarity:Belongs to the DNA/RNA non-specific endonuclease family.,
<b>Subcellular Location :</b>	Secreted .
<b>Expression :</b>	Brain,Platelet,
<b>Sort :</b>	18973
<b>No4 :</b>	1
<b>Host :</b>	Rabbit
<b>Modifications :</b>	Unmodified

## Products Images



Western Blot analysis of HEK293 lysis, using primary antibody at 1:1000 dilution. Secondary antibody(catalog#:RS23920) was diluted at 1:10000