

**ROS1 (Phospho Tyr2274) rabbit pAb**

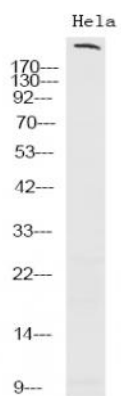
|                              |   |
|------------------------------|---|
| <b>Catalog No :</b>          | YP1469  |
| <b>Reactivity :</b>          | Human;Rat;Mouse;  |
| <b>Applications :</b>        | WB;IF   |
| <b>Target :</b>              | ROS1  |
| <b>Gene Name :</b>           | ROS1 MCF3 ROS   |
| <b>Protein Name :</b>        | ROS1 (Tyr2274)  |
| <b>Human Gene Id :</b>       | 6098  |
| <b>Human Swiss Prot No :</b> | P08922  |
| <b>Mouse Gene Id :</b>       | 19886   |
| <b>Mouse Swiss Prot No :</b> | Q78DX7  |
| <b>Rat Gene Id :</b>         | 25346   |
| <b>Rat Swiss Prot No :</b>   | Q63132  |
| <b>Immunogen :</b>           | Synthesized phospho peptide around human ROS1 (Tyr2274)   |
| <b>Specificity :</b>         | This antibody detects endogenous levels of Human ROS1 (phospho-Tyr2274)                                   |
| <b>Formulation :</b>         | Liquid in PBS containing 50% glycerol, 0.5% BSA and 0.02% sodium azide.                                   |
| <b>Source :</b>              | Polyclonal, Rabbit,IgG  |
| <b>Dilution :</b>            | WB 1:1000-2000. IF 1:50-200   |
| <b>Purification :</b>        | The antibody was affinity-purified from rabbit serum by affinity-chromatography using specific immunogen. |

---

|                               |  |
|-------------------------------|--|
| <b>Concentration :</b>        | 1 mg/ml  |
| <b>Storage Stability :</b>    | -15°C to -25°C/1 year(Do not lower than -25°C)   |
| <b>Observed Band :</b>        | 258kD  |
| <b>Background :</b>           | This proto-oncogene, highly-expressed in a variety of tumor cell lines, belongs to the sevenless subfamily of tyrosine kinase insulin receptor genes. The protein encoded by this gene is a type I integral membrane protein with tyrosine kinase activity. The protein may function as a growth or differentiation factor receptor. [provided by RefSeq, Jul 2008],   |
| <b>Function :</b>             | catalytic activity:ATP + a [protein]-L-tyrosine = ADP + a [protein]-L-tyrosine phosphate.,disease:A chromosomal aberration involving ROS1 is found in glioblastoma multiform (GBM). An homozygous deletion in chromosome 6q21 results in expression of a GOPC-ROS1 chimeric protein which has a constitutive receptor tyrosine kinase activity.,function:This is probably a cell growth or differentiation factor receptor with a tyrosine-protein kinase activity.,similarity:Belongs to the protein kinase superfamily. Tyr protein kinase family. Insulin receptor subfamily.,similarity:Contains 1 protein kinase domain.,similarity:Contains 9 fibronectin type-III domains., |
| <b>Subcellular Location :</b> | Cell membrane ; Single-pass type I membrane protein .  |
| <b>Expression :</b>           | Expressed in brain. Expression is increased in primary gliomas.  |
| <b>Sort :</b>                 | 6  |
| <b>No4 :</b>                  | 1  |
| <b>Host :</b>                 | Rabbit   |
| <b>Modifications :</b>        | Phospho  |

---

## Products Images



Western Blot analysis of HeLa using primary antibody at 1:1000 dilution 4 °C, overnight. Secondary antibody(catalog#:RS23920) was diluted at 1:10000 25 °C 1.5hours