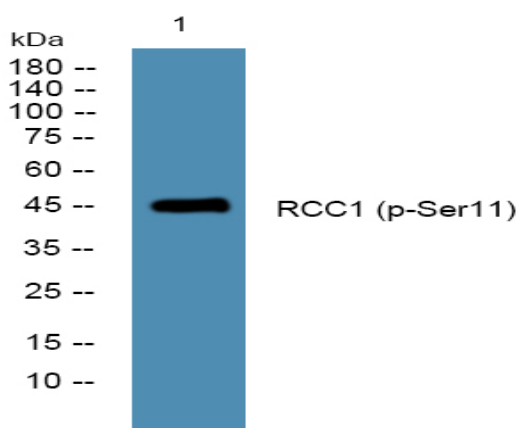


**RCC1 (Phospho Ser11) rabbit pAb**

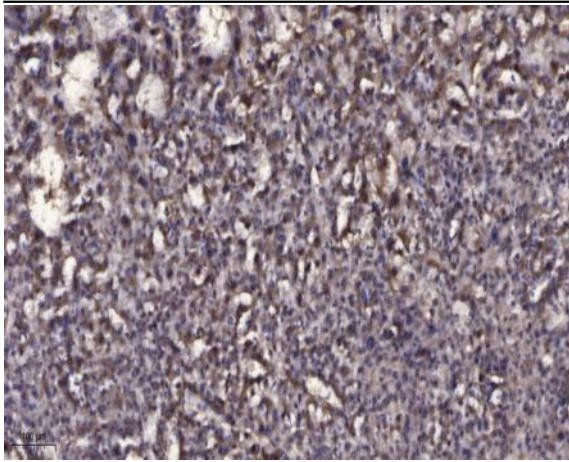
<b>Catalog No :</b>	YP1463
<b>Reactivity :</b>	Human;Rat;Mouse;
<b>Applications :</b>	WB;IHC
<b>Target :</b>	RCC1
<b>Gene Name :</b>	RCC1 CHC1
<b>Protein Name :</b>	RCC1 (Ser11)
<b>Human Gene Id :</b>	1104
<b>Human Swiss Prot No :</b>	P18754
<b>Mouse Gene Id :</b>	100088
<b>Mouse Swiss Prot No :</b>	Q8VE37
<b>Immunogen :</b>	Synthesized phospho peptide around human RCC1 (Ser11)
<b>Specificity :</b>	This antibody detects endogenous levels of Human RCC1 (phospho-Ser11)
<b>Formulation :</b>	Liquid in PBS containing 50% glycerol, 0.5% BSA and 0.02% sodium azide.
<b>Source :</b>	Polyclonal, Rabbit,IgG
<b>Dilution :</b>	WB 1:500-2000;IHC 1:50-300
<b>Purification :</b>	The antibody was affinity-purified from rabbit serum by affinity-chromatography using specific immunogen.
<b>Concentration :</b>	1 mg/ml
<b>Storage Stability :</b>	-15°C to -25°C/1 year(Do not lower than -25°C)

**Observed Band :** 45kD**Function :** disease:Patients with Raynaud disease produce antibodies that bind to RCC1.,function:Promotes the exchange of Ran-bound GDP by GTP. Involved in the regulation of onset of chromosome condensation in the S phase. Binds to the chromatin. RCC1/Ran complex (together with other proteins) acts as a component of a signal transmission pathway that detects unreplicated DNA.,similarity:Contains 7 RCC1 repeats.,subcellular location:Becomes dispersed throughout the cytoplasm during mitosis.,**Subcellular Location :** Nucleus . Chromosome . Cytoplasm . Predominantly nuclear in interphase cells (PubMed:12194828). Binds to mitotic chromosomes (PubMed:12194828, PubMed:17435751, PubMed:20668449). .**Expression :** Brain,Breast,Epithelium,Eye,Muscle,Testis,**Sort :** 14061**No4 :** 1**Host :** Rabbit**Modifications :** Phospho

## Products Images



Western blot analysis of lysates from Jurkat cells, primary antibody was diluted at 1:1000, 4° over night



Immunohistochemical analysis of paraffin-embedded human liver cancer. 1, Antibody was diluted at 1:200(4° overnight). 2, Tris-EDTA,pH9.0 was used for antigen retrieval. 3,Secondary antibody was diluted at 1:200(room temperature, 45min).